



SCHWEIZER SERVICE BULLETIN

DB-029
13 Feb 2009

MANDATORY

MANDATORY

MANDATORY

SUBJECT: LONGITUDINAL TRIM ASSEMBLY SPRING ATTACHMENT

MODELS AFFECTED: All 269D Series Helicopters Serial Numbers 0001 through 0077A.

TIME OF COMPLIANCE: At next 100 hour inspection or within 6 months, whichever occurs first.

REFERENCE: Model 269D Basic HMI, Revised: 02 Feb 2009, Model 269D Config. "A" Basic HMI, Revised: 8 Dec 2008, Model 269D Config. "M" Basic HMI, Revised: 13 Feb 2009

PREFACE: • The longitudinal trim spring assembly is attached to a bracket on the longitudinal cyclic control torque tube by an MS20392-2C7 clevis pin. The clevis pin is secured in place by an MS24665-20 cotter pin. Schweizer Aircraft Corp. has discovered that the dimension tolerance of the cotter pin can allow the head of the pin to slip through the clevis pin hole. This Service Bulletin replaces the MS24665-20 cotter pin with an MS24665-1011 cotter pin.

NOTE

Failure to comply with this bulletin may lead to longitudinal cyclic forces that cannot be trimmed to a neutral feel when the cyclic is moved longitudinally towards the aft position, thereby increasing pilot workload.

FAA APPROVAL: The technical aspects of this Service Bulletin are FAA approved.

PARTS REQUIRED: 1ea. MS24665-1011 Cotter Pin Procure locally

PROCEDURE:

- a. Gain access to longitudinal trim assembly in accordance with instruction in Basic HMI, Section 8 or Config. "M" Basic HMI, Section 9.
- b. Locate clevis pin shown in Figure DB-029-1 and replace existing cotter pin that is installed in clevis pin with an MS24665-1011 cotter pin. Installation of the cotter pin should be in accordance with AC 43.13-1B Section 7, Paragraph 7-127.
- c. Reinstall all interior panels and components removed to gain access to trim assembly.
- d. Record compliance with this Service Bulletin in the aircraft records.

WEIGHT AND BALANCE

Weight and Balance are not affected.

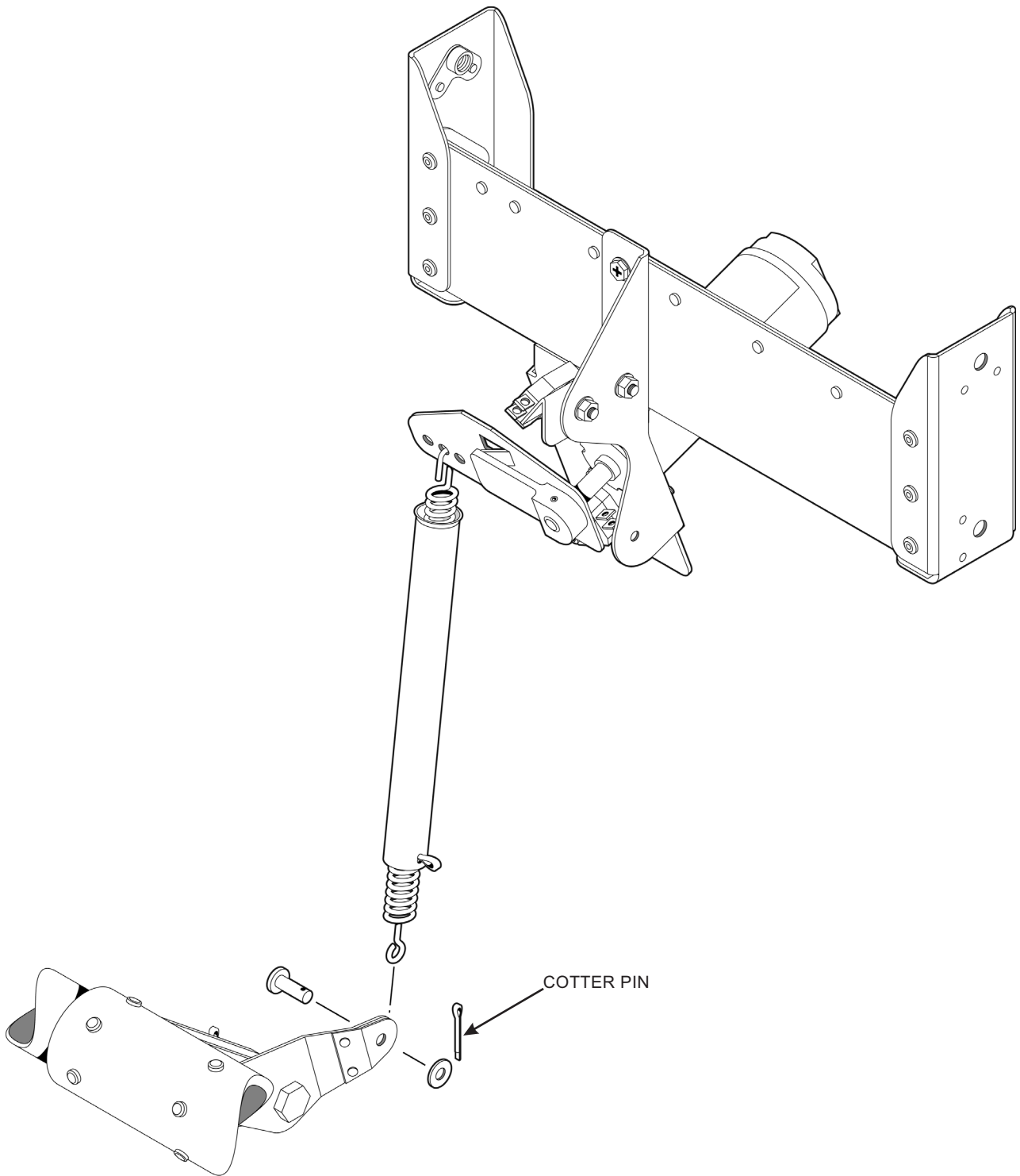


Figure DB-029-1. Longitudinal Trim Assembly Spring Attachment