



# SCHWEIZER SERVICE BULLETIN

B-275  
12 Mar 2001

MANDATORY

MANDATORY

MANDATORY

SUBJECT: ONE-TIME INSPECTION FOR CONDITION AND MODIFICATION OF CERTAIN IDLER PULLEY SUPPORT ASSEMBLIES

MODELS AFFECTED: ● Model 269C Helicopters S/N S1799, S1802, S1804 thru S1808

TIME OF COMPLIANCE: ● At the next 100-hour inspection or 30 days from issue date of this Service Bulletin, whichever occurs first.

REFERENCE: 269A, TH-55A, A-1, B & C Basic HMI (Issued: 15 Mar 1982; Revised 28 Nov 2000)

PREFACE: ● When a 269A5575-11 idler pulley support assembly is installed with 269A5437 BSC spacers (0.56 inch diameter) there is excess clearance between the spacers and the clutch drive V-belts. With this condition, the V-belt(s) could possibly jump out of the idler pulley groove(s) with the drive belt clutch disengaged. This Service Bulletin requires replacement of the BSC spacers with 0.75 inch diameter 269A5437-3 spacers which will remove the excess clearance between spacers and V-belts.

- Failure to comply with this Service Bulletin may lead to possible belt damage and/or breakage.

## PROCEDURE

- a. Gain access, remove V-belt drive cover hat (and shell if necessary) (Basic HMI, Section 10).
- b. Determine part number of idler pulley support assembly and spacer as follows:

NOTE

If part number is not legible in step (1) below, proceed to step (2).

- (1) Read part number stamped on idler pulley support assembly. If 269A5575 BSC, -3, -5, -7, or -9 assembly is installed, no further action is required; record compliance (step e. below).

NOTE

In next step, when measuring clearance between outer edge (rim) of idler pulley and spacer, insure that position of scale and angle of sight are correct to measure the distance between the closest points of the two components (Figure B-275-1, Detail A). Unacceptable assemblies measure approximately 0.35 inch between pulley and spacer; **AND** belts can be manually deflected out of pulley grooves.

- (2) Measure distance between outer edge of idler pulley and spacer; it should be approximately 0.25 to 0.28 inch. If this measurement is correct, it verifies that a 269A5575 BSC, -3, -5, -7, or -9 assembly is installed; **OR** that a 269A5575-11 assembly is installed with larger diameter (0.750 inch) 269A5437-11 spacers. In either event, no further action is required; record compliance (step e. below). If measurement is greater than 0.25 to 0.28 inch, proceed to step c.

**B-275**  
**12 Mar 2001**

- c. Remove the 269A5437 BSC spacers and replace with 269A5437-3 spacers using applicable steps of Basic HMI, Section 10. Check measurement specified in step b.(2) above.
- d. Install V-belt drive cover shell and hat (Basic HMI, Section 10).
- e. Record compliance with this Service Bulletin in the aircraft records.

**WEIGHT AND BALANCE**

Weight and balance are not affected.

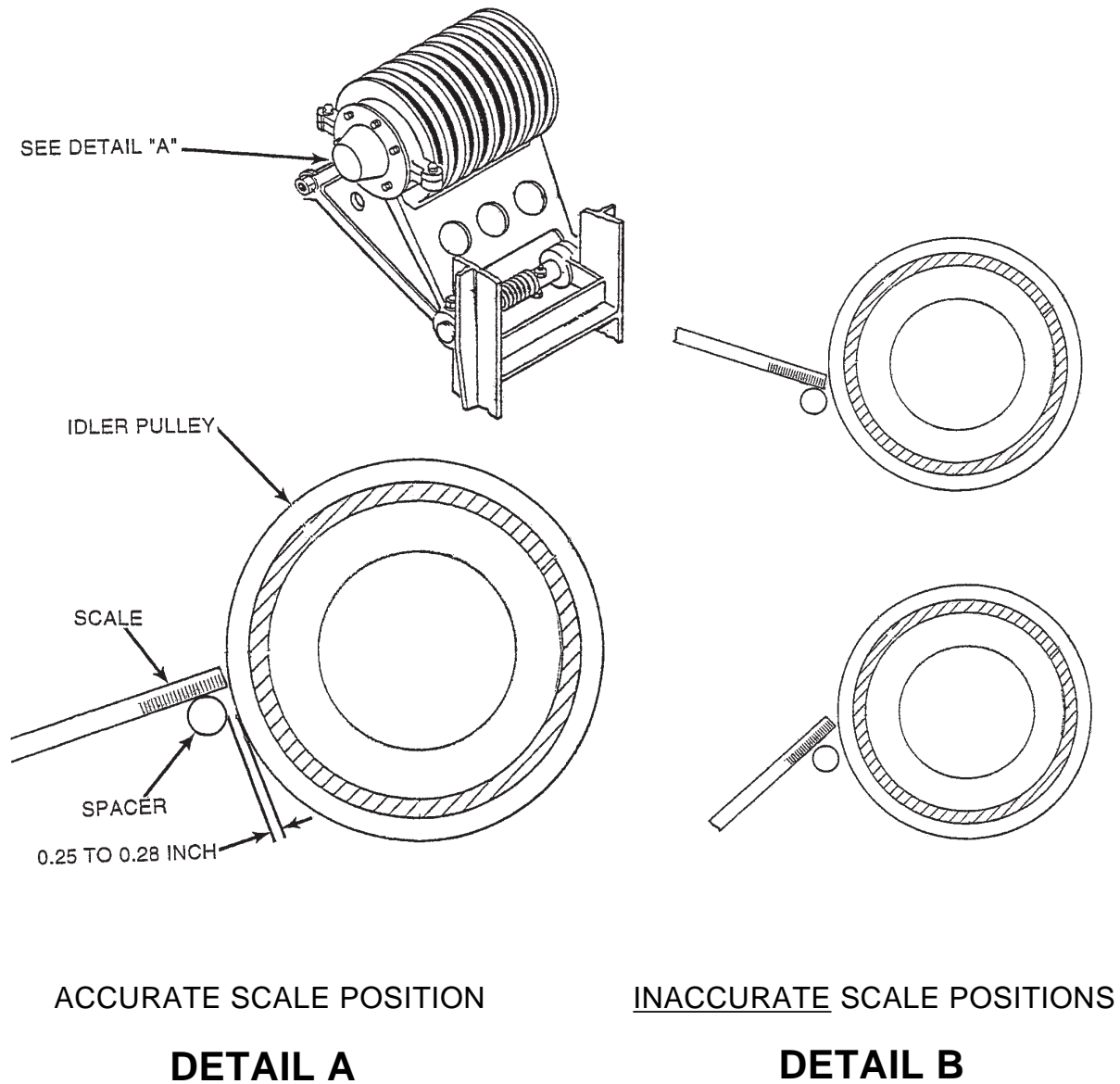


Figure B-275-1. Measuring Clearance between Idler Pulley and Spacer