



# SCHWEIZER SERVICE BULLETIN

C1B-030  
24 Aug 2010

MANDATORY

MANDATORY

MANDATORY

**SUBJECT:** CENTER CONTROL COVER CONTACTING LATERAL CYCLIC CONTROL ROD

**MODELS AFFECTED:** • 269C-1 Model Helicopters Serial Numbers 0001 - 0371

**TIME OF COMPLIANCE:** Next 100 Hour Inspection or six months whichever occurs first.

**REFERENCE:** 269C-1 Basic HMI, Revised: 16 Jul 2010

- PREFACE:**
- A condition exists where the left side bottom seat cushion contacts the center control cover and may displace the cover sufficiently to cause the cover to contact the lateral cyclic control rod. Over a period of time the cover chafes the control rod causing wear. If left uncorrected, the wear could exceed the wear limits published in the HMI and the control rod must be replaced. A cover modification has been developed that creates a recess in the cover to accommodate the seat cushion.
  - Failure to comply with this Service Bulletin may lead to chafing of the lateral control rod and subsequently require control rod replacement.

**FAA APPROVAL:** The technical aspects of this Service Bulletin are FAA approved.

<b>PARTS REQUIRED:</b>	<b>MATERIALS</b>	<b>DESCRIPTION</b>	<b>QTY</b>
	269A4067-003	Patch	1
	Adhesive, black	RTV 6803	A/R
ALTERNATE	Sealing Compound	PR 1422 (AMS-S-8802)	A/R
	Naptha	Cleaner (TT-N-95)	A/R
ALTERNATE	Isopropyl Alcohol	Cleaner (TT-I-735)	A/R
	NAS1329S3K80	Rivnut	1
	NAS603-10P	Screw	1
	AN960KD10L	Washer	1

**PROCEDURE:**

- Gain access to center control cover and remove cover in accordance with Basic HMI, Section 8.

NOTE

The patch is installed over the opening from the exterior of the cover and should fit flat on all contact surfaces. After insertion, an outline can be drawn around the edge of the patch to note the area covered. A minimum of .50 inch patch overlap is required around the perimeter of the opening. For proper fit of all edges, material can be removed from the cover up to the .50 inch limit (See Figure C1B-030-2).

- b. Trim along CUT LINE as shown in Figure C1B-030-1 and remove section. Place patch over opening and against cover as shown in Figure C1B-030-2. Check for flat fit on all contact surfaces and trim as necessary for proper fit. While trimming, assure a minimum of .50 inch bend area overlap exists.
- c. Using 180 grit sand paper, rough all contact surfaces of patch and center cover in bond areas.
- d. Thoroughly clean bond area with Naptha or Alcohol and air dry for 15 minutes.

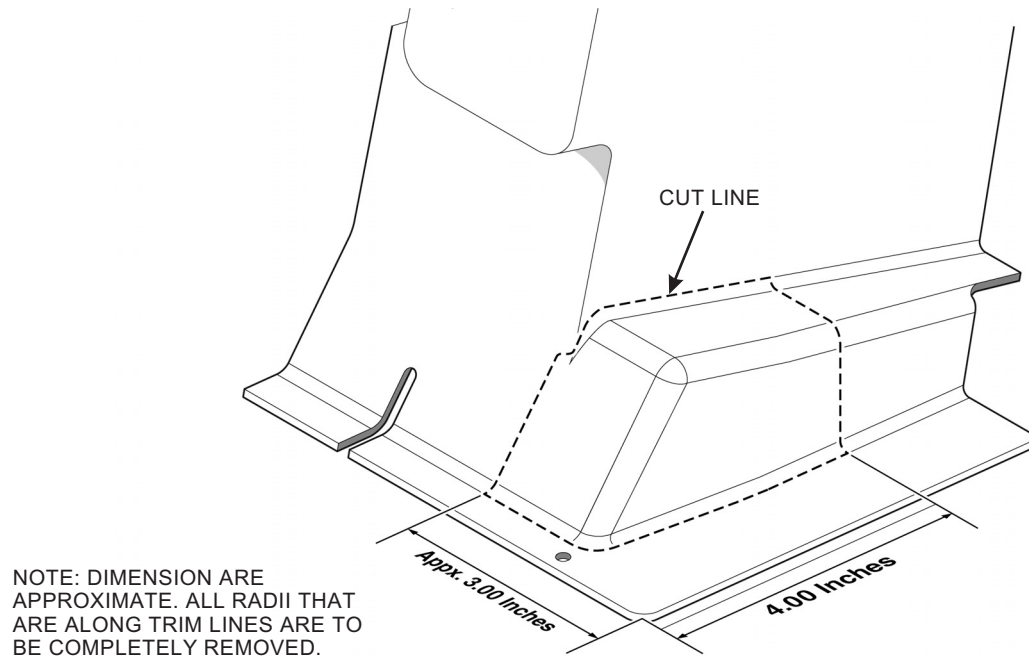
NOTE

In the following step, if sealing compound is used, prepare sealing compound in accordance with the manufacturer's instruction.

- e. Apply a bead of adhesive (or sealing compound) to bonding surfaces and install patch. Press patch securely against cover and allow adhesive to cure over time period recommended by adhesive manufacturer's (Figure C1B-030-2).
- f. After adhesive (or sealing compound) is cured, trim excess material around edges as required and back drill pre-existing screw hole in flange (Figure C1B-030-2).
- g. Remove bolt attaching lateral control rods to center lateral bellcrank assembly and reinstall bolt with bolt head oriented outboard, in accordance with Basic HMI, Section 8.
- h. Drill a .250 inch hole in seat frame in location 2.75 inch forward from seat belt bracket and .313 inch outboard from edge of seat frame as shown in Figure C1B-030-3 and install a NAS1329S3K80 Rivnut.
- i. Place a center mark on aft edge of cover flange as shown in Figure C1B-030-2. Place center cover in position and align center mark on flange with seat belt bracket. With cover held in position and using a hole finder centered on Rivnut, drill a .190 inch hole in cover flange.
- j. Secure center cover in position using NAS603-10P screw and AN960KD10L washer and any hardware in accordance with Basic HMI during cover removal. Reinstall interior removed in accordance with the Basic HMI to gain access to cover.
- k. Check for any interference with the flight controls.
- l. Record compliance with this Service Bulletin in the aircraft records.

WEIGHT AND BALANCE

Weight and Balance are not affected.



NOTE: DIMENSIONS ARE APPROXIMATE. ALL RADII THAT ARE ALONG TRIM LINES ARE TO BE COMPLETELY REMOVED.

Figure C1B-030-1. Control Cover Modification

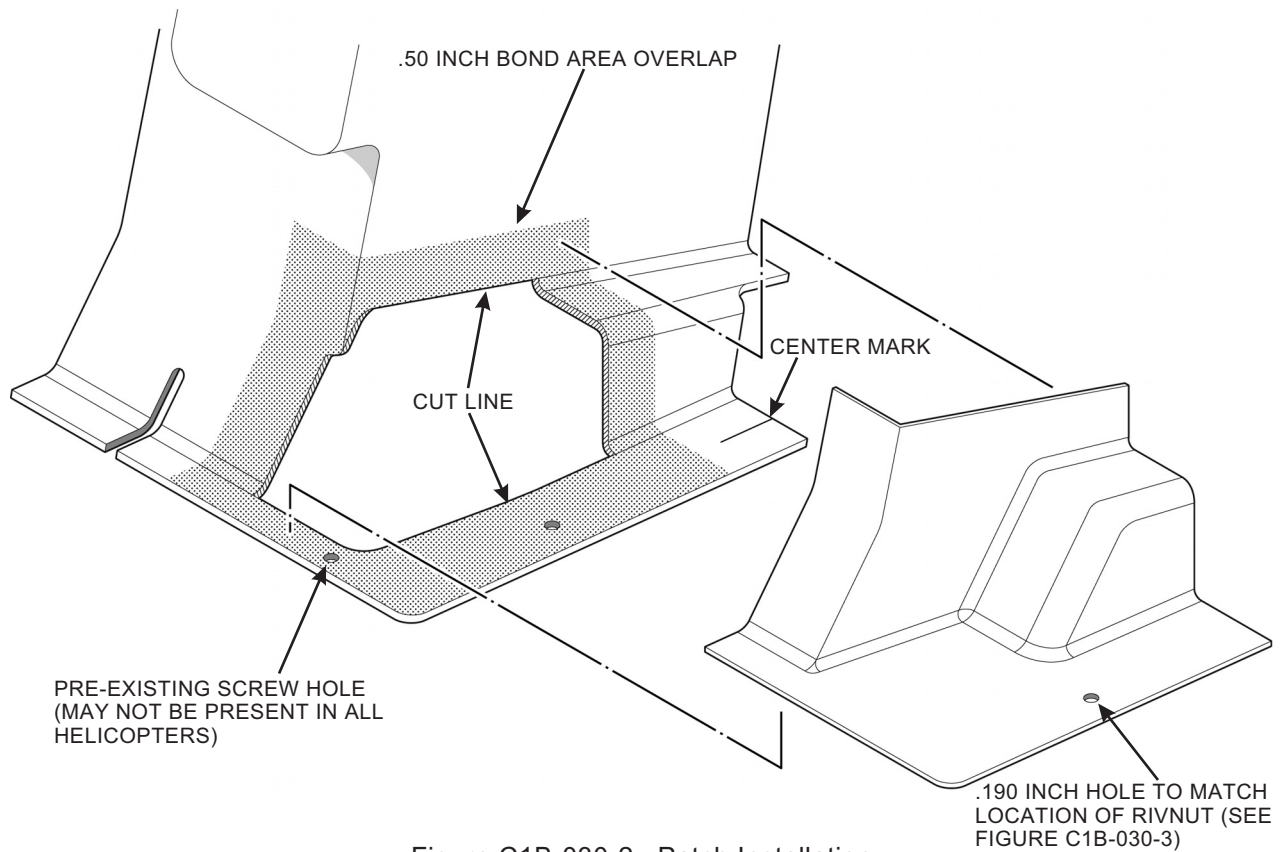


Figure C1B-030-2. Patch Installation

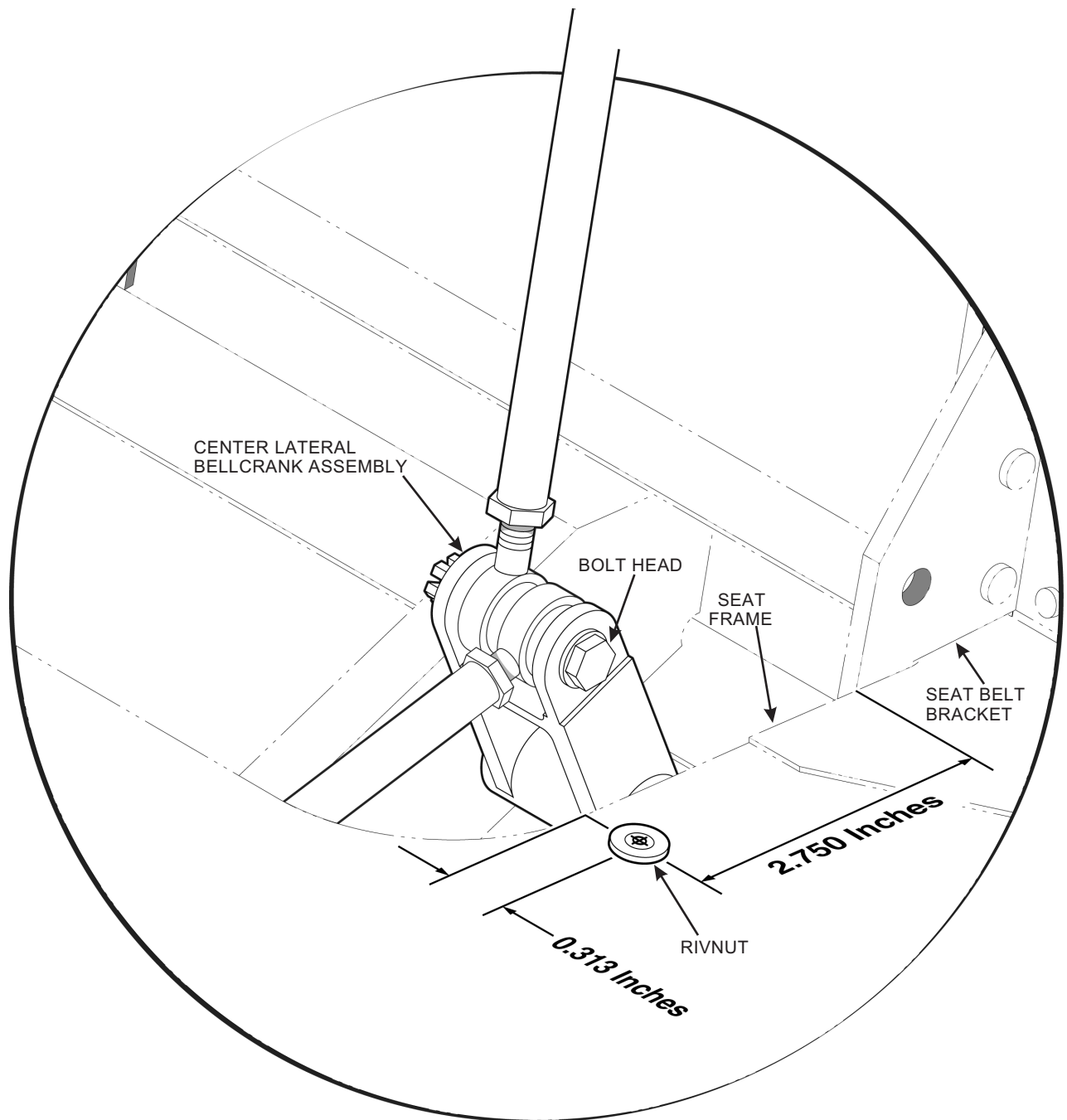


Figure C1B-030-3. Rivnut Installation