



SCHWEIZER SERVICE INFORMATION NOTICE

NOTICE NO. N-15
DATE November 4, 1966
PAGE 1 OF 6

FAA Approved

SUBJECT: FIELD INSTALLATION - CHIP DETECTOR ENGINE
AND TRANSMISSION

MODELS AFFECTED: 269A (TH55A) Helicopter Serial No's. 0315 thru 500

TIME OF COMPLIANCE: At owners/operators discretion.

PURPOSE: To provide a means of warning the pilot of possible malfunction in, or impending failure of the engine and main rotor gear drive assembly.
This service notice defines the procedures necessary to install the chip detector warning system.

Reference

269A/A-1 Handbook of Maintenance Instructions
TH55A HMI Addendum

Parts Required

<u>Nomenclature</u>	<u>Part No.</u>	<u>Qty.</u>	<u>Mfg.</u>
Kit - chip detector	M 10005	1	HTC-AD

NOTICE NO. N-15
DATE November 4, 1966
PAGE 2 OF 6

- a. Cut lockwire, remove magnetic drain plugs and check valve assemblies from main rotor gear drive assembly and engine sumps. (see reference)
- b. Drain oil from gear drive assembly and engine.
- c. Using O ring (AN 6290-10) install chip detector unit (7213) in gear drive assembly sump drain hole. (See Figure 1)
- d. Using thread guage, determine thread used in engine sump drain hole.

NOTE

If thread is other than 1-20 UNEF-3A, the drain hole must be retapped to that thread size prior to installation of the detector unit. If retapping is necessary, utilize steps e. and f.

- e. Retap engine sump drain hole to 1-20 UNEF-3A thread.
- f. Remove all metal particles from interior and exterior of engine sump.
- g. Install detector unit (6825) in engine sump in following sequence: gasket, (AN 900-16) spacer, (269A8171) O ring (AN 6290-12) and detector.
- h. Remove instrument panel fairing.
- i. Locate and drill 0.500 to 0.505 inch diameter hole in instrument panel. (See Figure 2)
- j. Secure warning light assembly to instrument panel.
- k. Install and connect wiring between two detector units and light. (See Figure 3)

NOTE

Follow existing wire bundles when routing chip detector circuit wiring. Secure, connect and splice wire in accordance with standard procedures.

- l. Visually inspect installation for discrepancies.

- m. Set battery switch in "ON" position.
- n. Press to test chip detector warning light.

NOTE

Lamp will light if the circuit is complete, then go out.

- o. Set battery switch in "OFF" position.

NOTE

If no discrepancies are noted, proceed as follows.

- p. Using lockwire, secure detector unit to gear drive assembly and engine sump.
- q. Fill gear drive assembly and engine with lubricant (see reference).

Weight & Balance

Not applicable.

NOTICE NO. N-15
DATE November 4, 1966
PAGE 4 OF 6

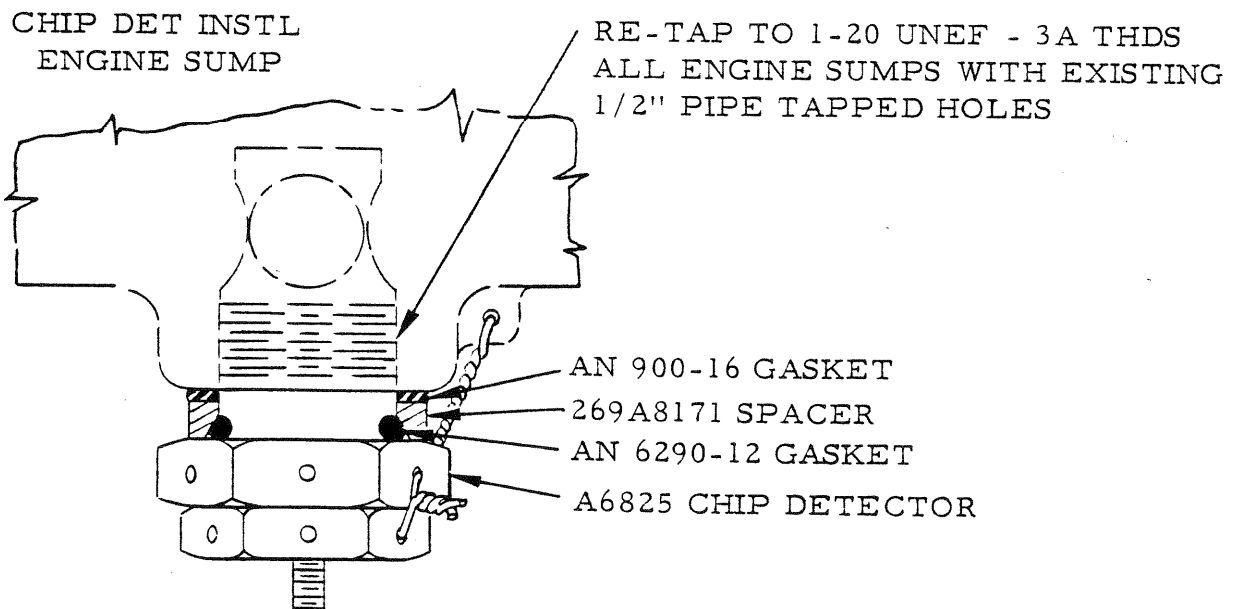
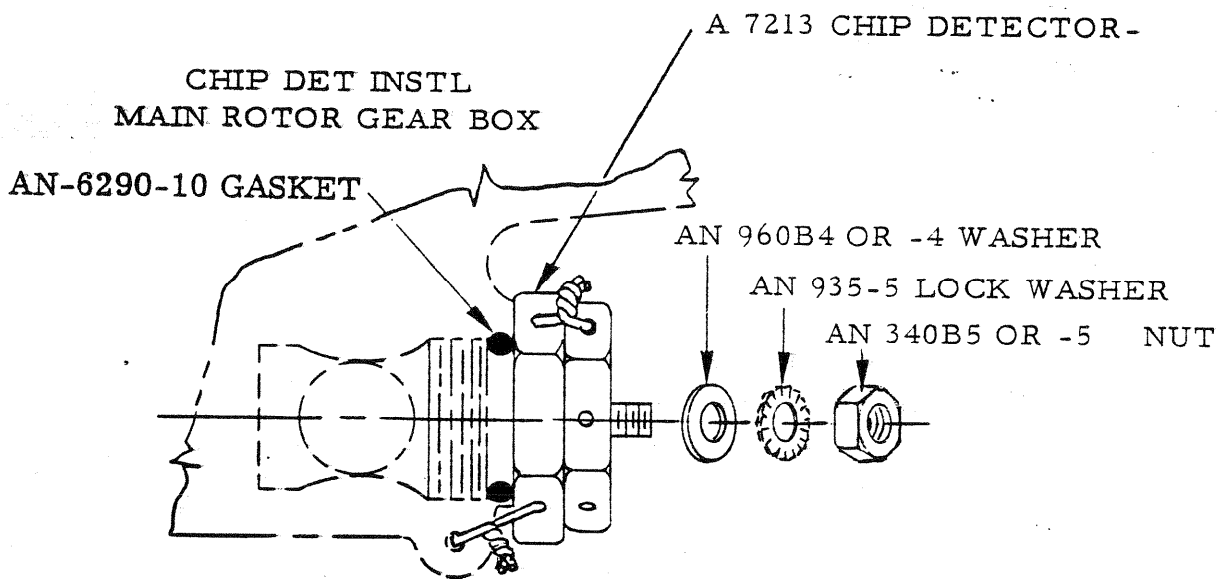


Figure 1

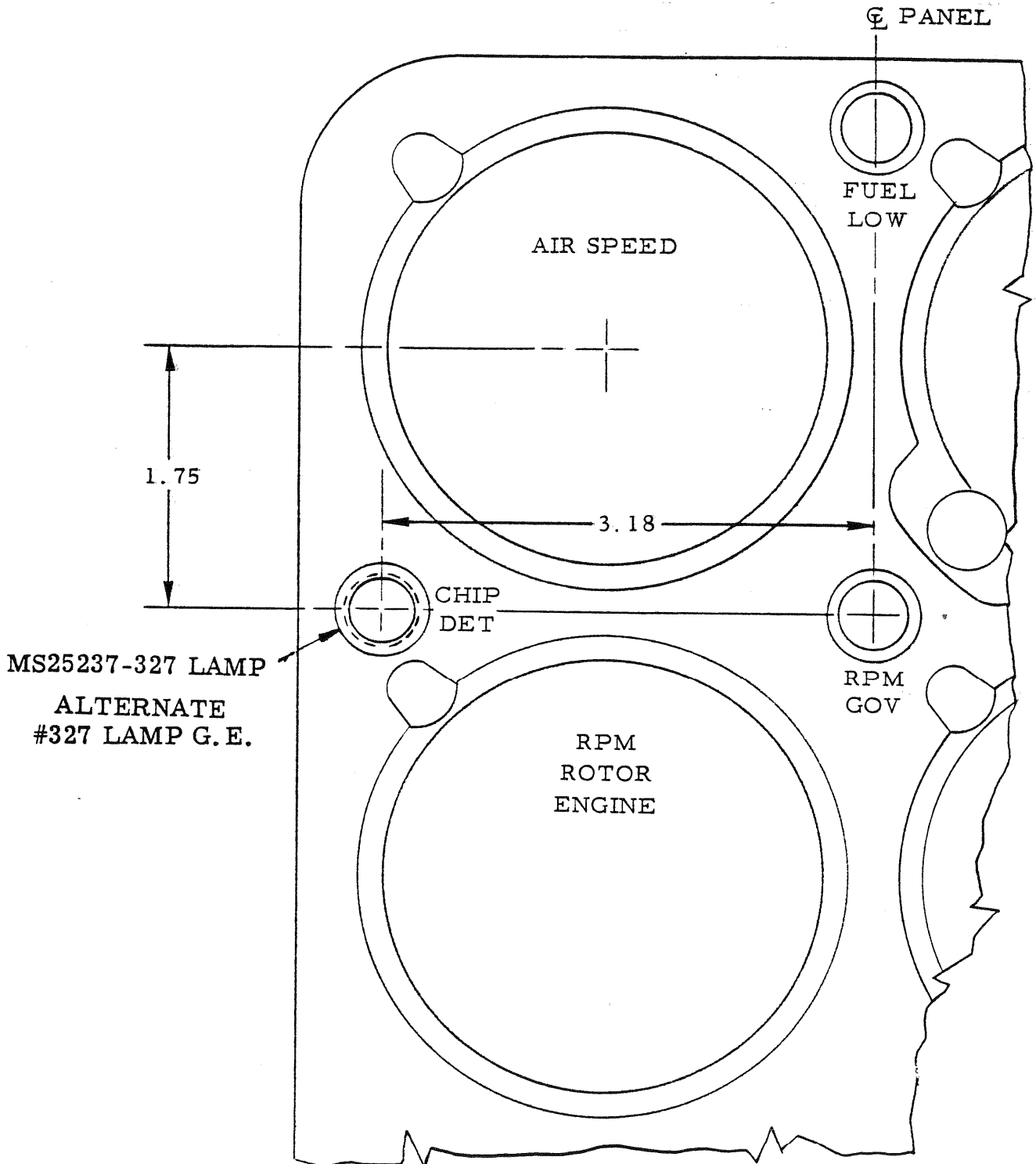


Figure 2

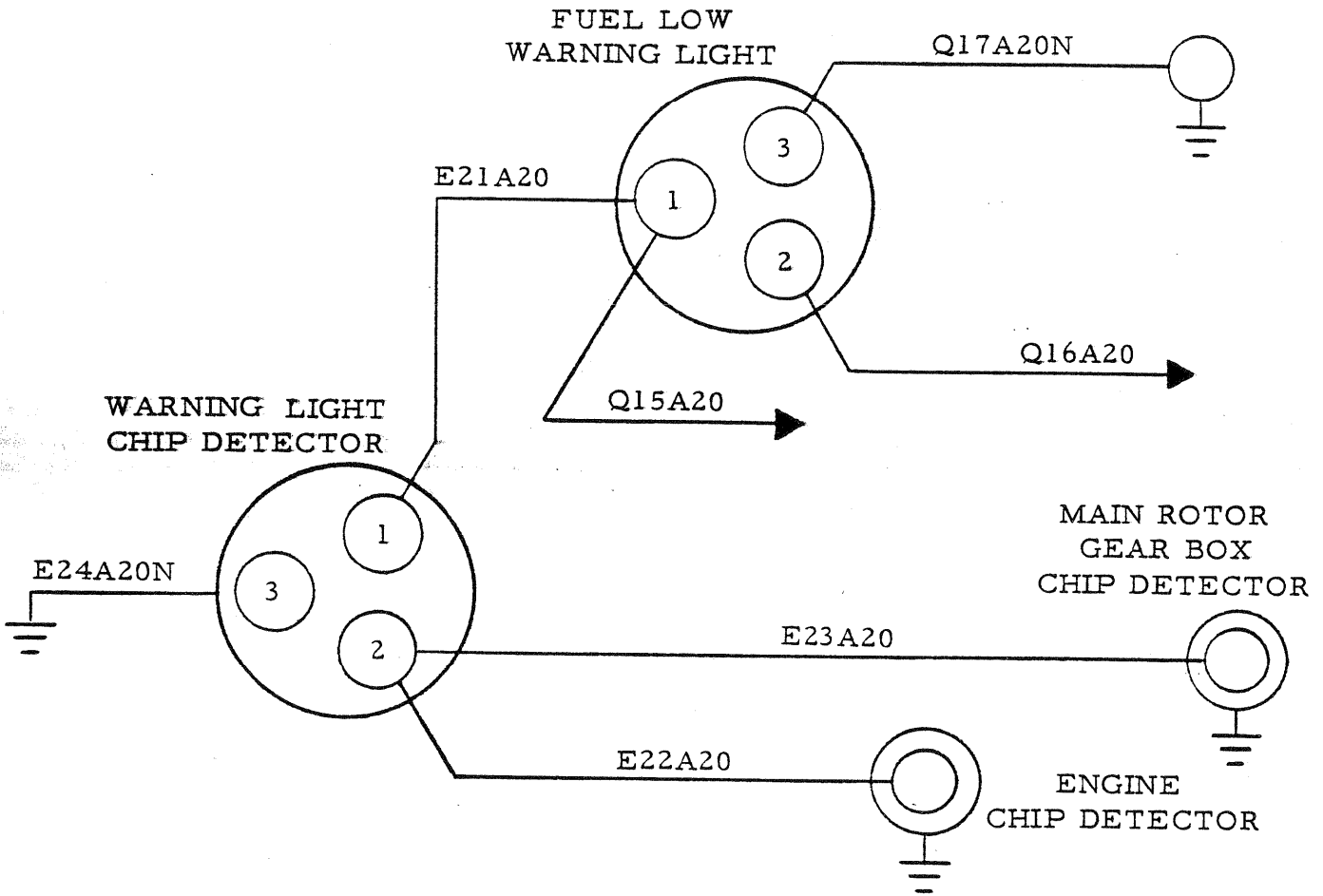


Figure 3