



# SCHWEIZER SERVICE NOTICE

NOTICE NO. N-85.3\*

DATE 18 June 1976

PAGE 1 OF 3

\*Supersedes Service Information  
Notice No. N-85.2 dated  
1 December 1975

MANDATORY

MANDATORY

MANDATORY

FAA APPROVED

**SUBJECT:** INSTALLATION - ADAPTER-MOUNTED IDLER PULLEY CLUTCH ASSEMBLY KIT, PN 269A5447

**MODELS AFFECTED:** 269A Helicopter Serial No. 0011 thru 0314  
269A-1 Helicopter Serial No. 0001 thru 0041  
269A (TH-55A) Helicopter Serial No. 0315 thru 1109  
269B Helicopter Serial No. 0001 thru 0472  
269C Helicopter Serial No. 0001 thru 0149

**TIME OF COMPLIANCE:** Shall be accomplished as soon as possible but in no event later than the next 100 hours of helicopter operation, or three months, whichever occurs first, unless subject adapter-mounted idler pulley clutch assembly kit is already installed.

**PREFACE:** The information given in this Service Information Notice lists a procedure for installation of the subject adapter-mounted (one piece support) idler pulley clutch assembly kit on the above affected helicopters, as replacement for existing shaft-mounted (dual arm) type idler pulley clutch assemblies, PN 269A5515, 269A5444, and 269A5444-9.

The adapter-mounted type idler pulley clutch assembly provides optimum strength and support for larger size, longer life bearings, simplified field maintenance and inspection, more dependable operation, and increased safety. Figure 1 of this Notice defines two tools for local fabrication; these tools are designed to facilitate repetitive maintenance on the new pulley assembly.

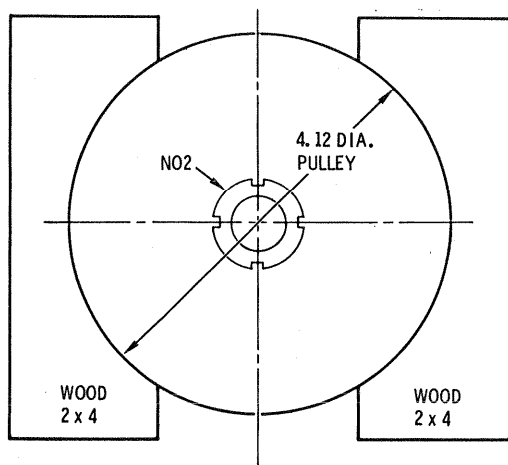
## Reference

269 Series - Basic HMI, Issued 1 April 1973; Revision No. 3, 15 March 1975

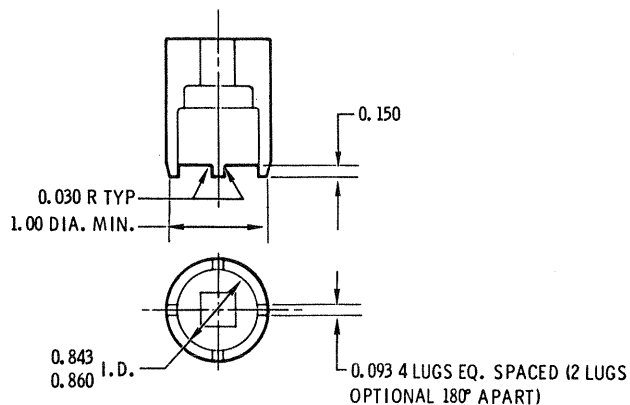
(■) Denotes portion of text added or revised.

# Hughes Helicopters

NOTICE NO. N-85, 3  
 DATE: 18 June 1976  
 PAGE: 2 of 3



CLAMPING BLOCKS-IDLER PULLEY BEARING/LOCKNUT  
 INSTALLATION 269A5582 PULLEY ASSY.



WRENCH-NO2 NUT  
 MAKE FROM 25/32 12 POINT SOCKET WITH 3/8 OR  
 1/2 IN. DRIVE OR APPROX. EQUIV. SOCKET

88-073

Figure 1. Field Fabrication of Special Tools - Idler Pulley Bearing/Locknut Installation

## PARTS LIST

<u>Nomenclature</u>	<u>Part No.</u>	<u>Qty</u>	<u>Mfr</u>
Kit Installation - Clutch Assembly - Belt Drive Idler Pulley	269A5447	1	HH

## NOTE

The kit (PN 269A5447) may be purchased at a special discount price, from the effective date of this Notice through 31 December 1976; the price is \$880.00. After 31 December 1976, the kit price will be listed in the Parts Price List.

## PROCEDURE

- a. Remove existing shaft-mounted (dual arm) idler pulley assembly. (Refer to Basic HMI, Section 10.)

## Hughes Helicopters

NOTICE NO. N-85.3

DATE: 18 June 1976

PAGE: 3 of 3

### NOTE

Retain spring and two end spacers for clutch shaft; also retain hardware used to secure spring to clutch shaft and belt drive frame.

- b. Install new 269A5447 adapter-mounted (one-piece support) idler pulley assembly; use new 269A5583 clutch shaft and existing spring and end spacers, as shown in Basic HMI. Install new clutch shaft and ABC5526 bolts with zinc chromate in pulley frame.
- c. Check clutch engagement cable; perform operational check of clutch engagement system.
- d. Record installation of new 269A5447 adapter-mounted idler pulley assembly, per this Notice, in Compliance Record of helicopter Log Book.
- e. Record installation of new 269A5050-74 idler pulley bearings in Component Record of helicopter Log Book.

### NOTE

Recommended retirement life of 269A5050-74 bearing is 1800 hours. Bearing shall be inspected at each 300-Hour Periodic Inspection. Remove end caps for bearing inspection. Check condition and grease capacity. No other disassembly is required.

### WEIGHT AND BALANCE DATA

ADD: 1.3 pounds at 114 inch arm