

**SCHWEIZER AIRCRAFT CORP.**

Supplement to the Approved  
Rotorcraft Flight Manual

For

Schweizer 300C Model 269C Helicopters

with

**EXTENDED HEIGHT LANDING GEAR**  
(Part Number 269A3260-1)

Date of Original Approval : NOV 12 1997

Approved By: Michele J. Maurer  
Michele J. Maurer,  
Manager, Systems and Flight Test  
Branch, NYACO, ANE-172

SCHWEIZER MODEL 269C HELICOPTER  
CSP-C-1T

**LOG OF PAGES**

Page	Date	Page	Date
1	12 Nov 1997	7	12 Nov 1997
2	12 Nov 1997	8	12 Nov 1997
3	12 Nov 1997	9	12 Nov 1997
4	12 Nov 1997	10	12 Nov 1997
5	12 Nov 1997		
6	12 Nov 1997		

**LOG OF REVISIONS**

Number Change	Date	Description

**NOTE**

The change bar (■) defines the latest approved changes.

SCHWEIZER MODEL 269C HELICOPTER  
CSP-C-1T

INDEX

Section	Title	Page
I	General . . . . .	5
II	Limitations . . . . .	7
III	Emergency and Malfunction Procedures . . . . .	7
IV	Normal Procedures . . . . .	7
V	Performance Data . . . . .	7
VI	Weight & Balance Data . . . . .	8
VII	Aircraft Handling, Servicing & Maintenance . . . . .	10
VIII	Additional Operations & Performance Data . . . . .	10

SCHWEIZER MODEL 269C HELICOPTER  
CSP-C-1T

This page is intentionally left blank.

SCHWEIZER MODEL 269C HELICOPTER  
CSP-C-1T

**SECTION I**  
General

This supplement must be carried in the applicable basic FAA approved 300C Model 269C Rotorcraft Flight Manual when the rotorcraft is equipped with the optional 269A3260-1 Extended Height Landing Gear. Except as modified by this flight manual supplement, operation in compliance with the basic approved Rotorcraft Flight Manual is mandatory.

The Schweizer Extended Height Landing Gear provides additional ground clearance for the helicopter, see Figure 1-1.

# SCHWEIZER MODEL 269C HELICOPTER CSP-C-1T

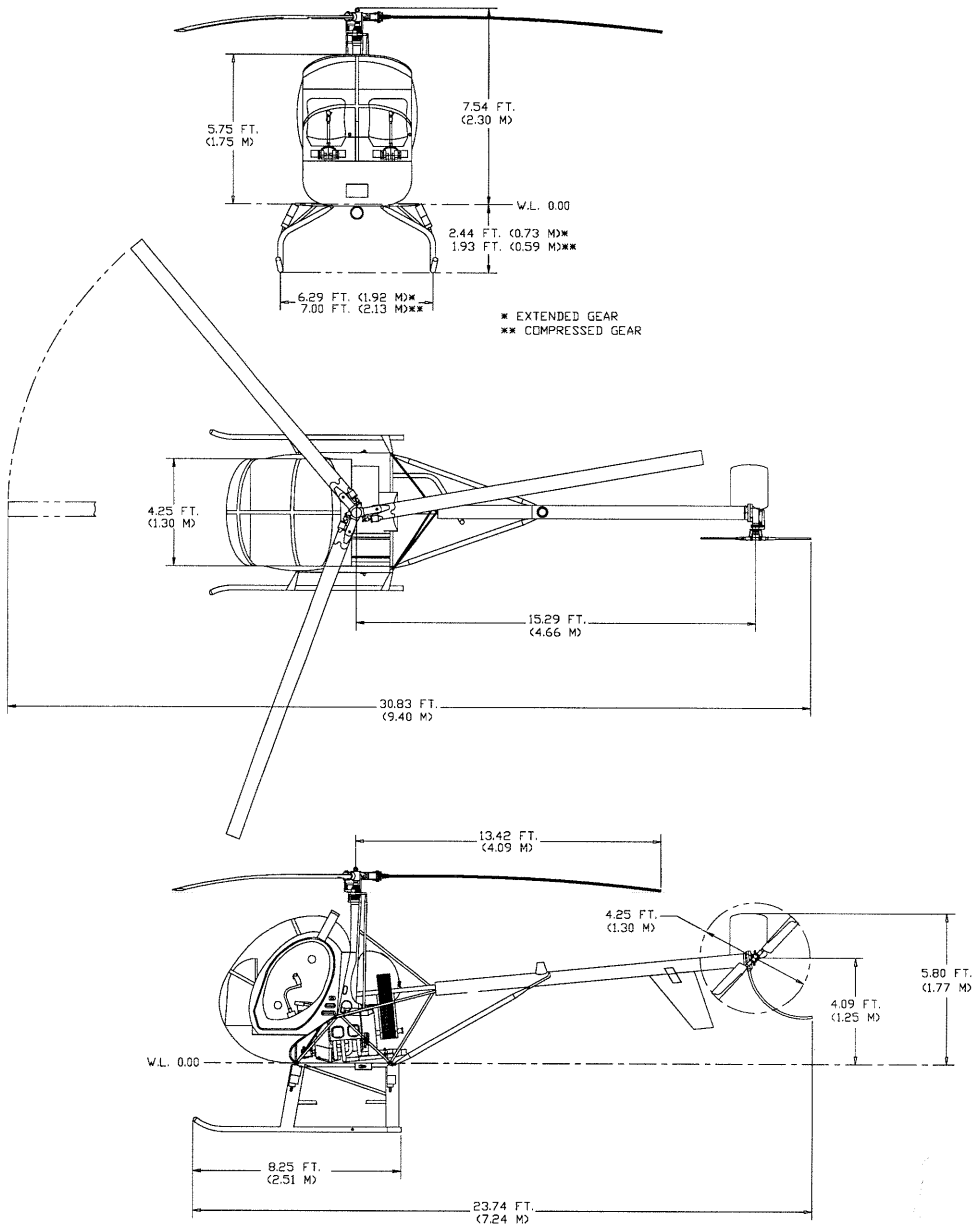


Figure 1-1. Principal Dimensions

SCHWEIZER MODEL 269C HELICOPTER  
CSP-C-1T

**SECTION II**

Limitations  
Not Affected

**SECTION III**

Emergency and Malfunction Procedures  
Not Affected

**SECTION IV**

Normal Procedures

**4.1 PRACTICE AUTOROTATION**

**CAUTION**

**Any running landing with new skid shoes will result in a more noticeable nose down tendency during ground slide.**

**SECTION V**

Performance Data

Reduce all in-ground-effect hover ceilings (2-foot skid height) shown in Section 5 of the Basic RFM by 260 feet when equipped with the Extended Height Landing Gear.

SCHWEIZER MODEL 269C HELICOPTER  
CSP-C-1T

**SECTION VI**  
Weight and Balance Data

- 6-1.** The 269A3260-1 Extended Height Landing Gear uses different jacking points than the standard height landing gear to perform aircraft weight and balance. See Figure 6-1 for new jacking point locations.



# SCHWEIZER MODEL 269C HELICOPTER CSP-C-1T

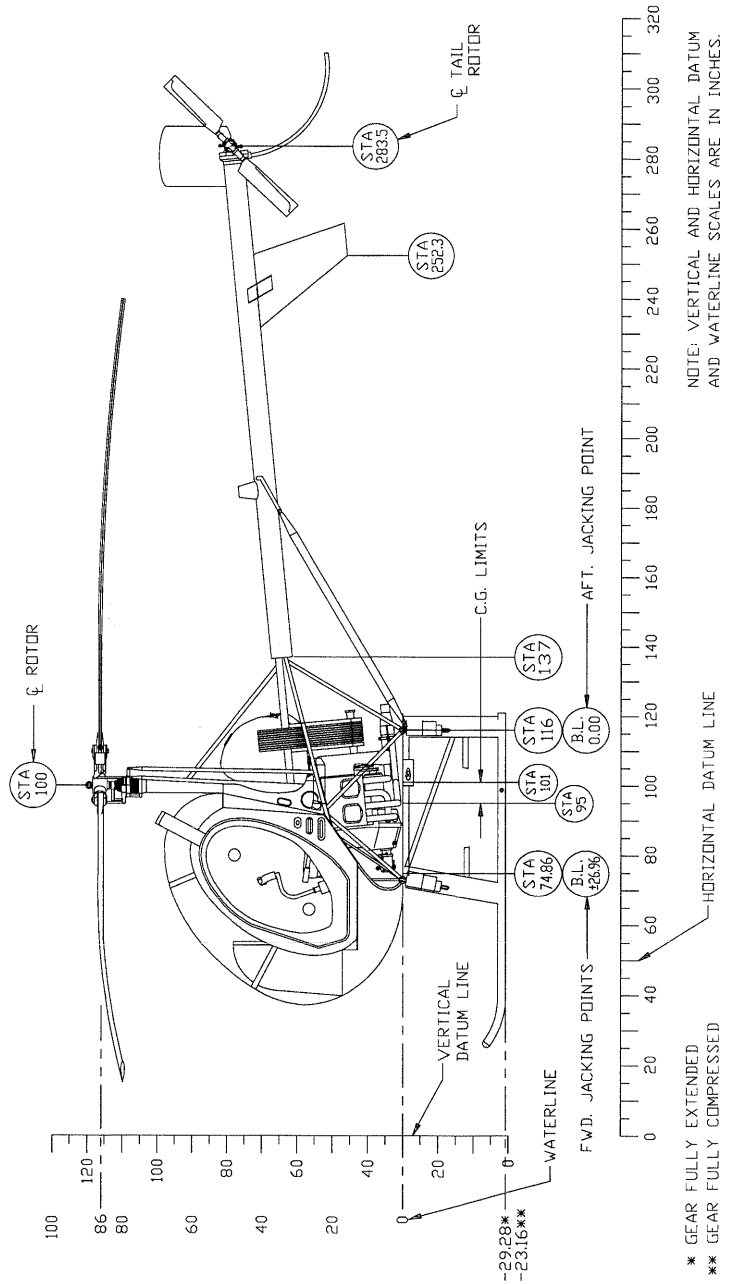


Figure 6-1. Station Diagram

SCHWEIZER MODEL 269C HELICOPTER  
CSP-C-1T

**SECTION VII**

Aircraft Handling, Servicing and Maintenance  
Not Affected

**SECTION VIII**

Additional Operations and Performance Data

Extended Height Landing Gear Installation effects on cruise performance  
have not yet been determined.