



SCHWEIZER SERVICE BULLETIN

MANDATORY

MANDATORY

MANDATORY

SUBJECT: TRIPLE-LATCH DOOR - LOWER LATCH BOLT AND COLLECTIVE FRICTION GUIDE ASSEMBLY INTERFERENCE

MODELS AFFECTED: All Model 269C Helicopters equipped with SA-269K-060 triple-latch door kit purchased prior to the issue date of this Service Bulletin or factory installed triple-latch doors prior to serial number 1583.

TIME OF COMPLIANCE: Within next 10 hours time in service or no later than 60 days after issue date of this Service Bulletin, whichever occurs first

REFERENCE: 1 CKP-C-44 - SA-269K-060 Triple-Latch Door Kit (Reissued: 28 Feb 92)

PREFACE: Reports indicate that when the left side triple-latch door is installed the lower latch nut could interfere with the collective friction guide assembly, and restrict the movement of the collective stick.

This bulletin provides instructions to reposition the lower left side door latch nut.

Failure to comply with this Service Bulletin may lead to loss of control of the helicopter and subsequent serious injury, death and/or property damage.

PROCEDURE:

NOTE

Refer to Figure B-250-1 for steps a. through c.

- a. Remove the 22K1-048 cap nut and washer from left side door's lower latch assembly.
- b. While maintaining proper shim stack-up remove NAS1404-17 bolt and reverse its direction by installing bolt from the inside.
- c. Install washer and tighten cap nut (now located on outside of door assembly).
- d. Close and latch door. Move the collective stick through full range (up and down) to verify adequate clearance exists between collective friction guide assembly and lower latch nut/bolt.
- e. Record compliance with this Service Bulletin in the aircraft records.

WEIGHT AND BALANCE

Weight and balance are not affected.

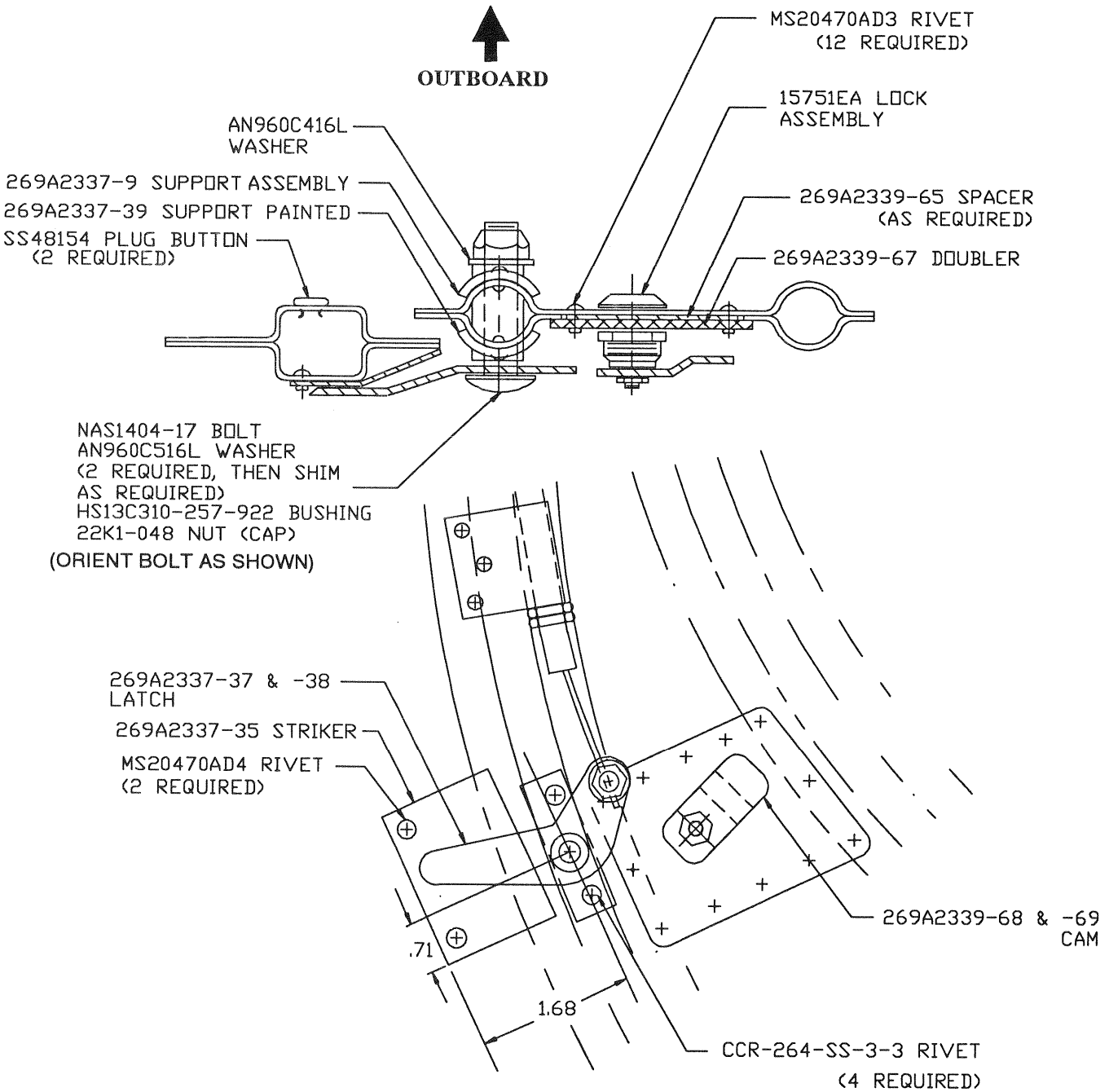


Figure B-250-1. Lower left latch bolt installation