



SCHWEIZER SERVICE LETTER

L-160
14 Oct 1996

SUBJECT: STRUT AND BRACKET ASSEMBLY - BELT DRIVE INSTALLATION

MODEL AFFECTED: 269C Helicopters; S/N S-004 through S-1732

The 269A5423 strut assembly could be inadvertently reassembled incorrectly, in relation to the 269A5517 bracket assembly, after maintenance of belt drive system. The correct orientation of the strut, and attachment to bracket, is illustrated in Figure L-160-1 (Page 2 of 2).

Possible disorientation of parts:

- a. The strut is installed on top of the bracket.
- b. The strut is installed upside down (narrow side of attachment flange forward).
- c. The strut is installed upside down and on top of the bracket.

On helicopter S/N S-1733 and subsequent (and current spares) both bracket and strut have an arrangement to prevent disorientation of mating parts. As an option, the rivet and washer arrangement shown on Figure L-160-1 can be installed in the field.

If in doubt that the bracket and strut are assembled correctly, orientation should be checked for the conditions specified above. If assembled wrong, it is recommended that these parts be disassembled, inspected for cracks, and reassembled correctly.

When performing maintenance inspections, repairs, or replacement of parts on the 269 series helicopter, all applicable maintenance instructions and inspections (found in the HMI) must be complied with.

SCHWEIZER AIRCRAFT CORP.

A handwritten signature in cursive script that reads 'David J. Roemer'.

David J. Roemer, Manager

Customer Support Services

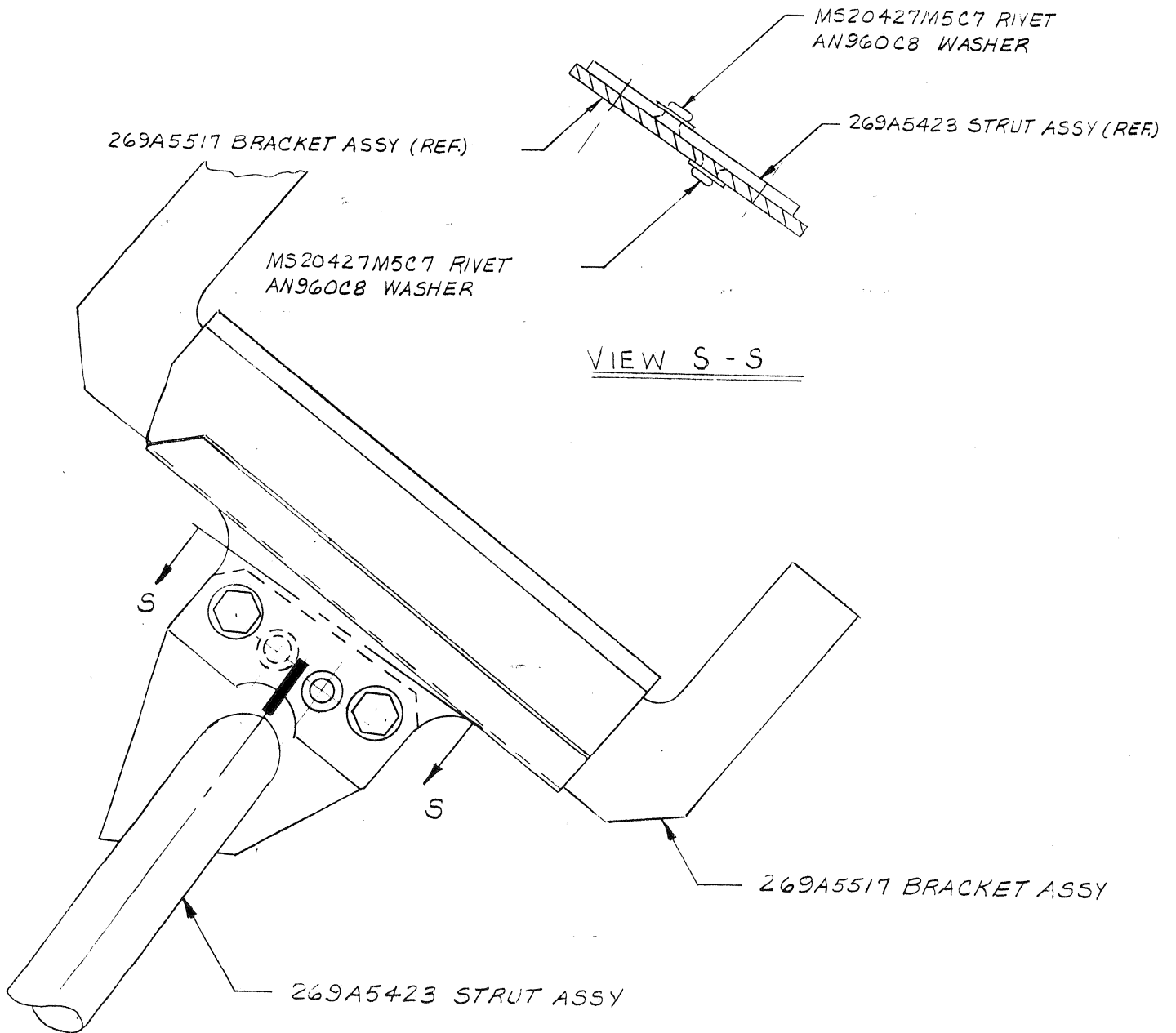


Figure L-160-1. Bracket and Strut Orientation