



SCHWEIZER SERVICE NOTICE

NOTICE NO. N-190

DATE 15 December 1983

PAGE 1 OF 5

MANDATORY

MANDATORY

MANDATORY

SUBJECT: BUNGEE INSTALLATION KIT, PN M10123 - COLLECTIVE PITCH STICK

MODELS AFFECTED: Model 269A, TH-55A, 269A-1 and 269B Helicopters equipped with PN 269A1190-1 Main Rotor Blades

TIME OF COMPLIANCE: At owners and operators discretion

PREFACE: The information given in this Service Information Notice lists a procedure for installing a stiffer PN 269A7242-5 collective bungee assembly on the above affected helicopters which have PN 269A1190-1 main rotor blades installed as replacement for early PN 269A1131 Series or PN 269D1145 Series blade assemblies.

It is to be noted that the kit installation incorporates the same PN 269A7242-5 bungee used on Model 269C helicopters. Although the PN 269A1190-1 main rotor blades are certified with the original PN 269A7242 bungee installation, field reports indicate that the stiffer -5 spring is more desirable to offset the heavier collective with the 269A1190-1 blades installed.

Rework per the kit installation instructions consists primarily of adding a new attach fitting with reinforcement doublers for the bungee upper end attachment, and a new adapter at the collective pitch stick housing for the bungee lower end attachment. Details are also provided for optional field fabrication of a special bungee spring compression tool, PN 269A7242-5-80901.

Reference

- 269 Series - Basic HMI (CSP-C-2), Reissued 15 March 1982
- 269 Series - HMI Configuration Supplement A/A-1 (CSP-C-2A), Reissued 15 September 1982
- 269 Series - HMI Configuration Supplement TH-55A (CSP-C-2D), Issued 1 February 1972; Revised 15 October 1978
- 269 Series - HMI Configuration Supplement B (CSP-C-2B), Issued 1 March 1973; Revised 15 July 1982

PARTS LIST

<u>Nomenclature</u>	<u>Part No.</u>	<u>Qty</u>	<u>Mfr</u>
Bungee installation kit - collective pitch stick	M10123	1	HHI

TOOLS AND EQUIPMENT

Rivet Gun

Drill, portable

Drill bit - #30

Drill bit - #52

*Tool, bungee	PN 269A7242-5-80901 or equivalent	HHI
---------------	--------------------------------------	-----

*May be field fabricated per details, Figure 2

MATERIALS

Primer, zinc chromate	TT-P-1757	Commercial
-----------------------	-----------	------------

KIT INSTALLATION INSTRUCTIONS

NOTE

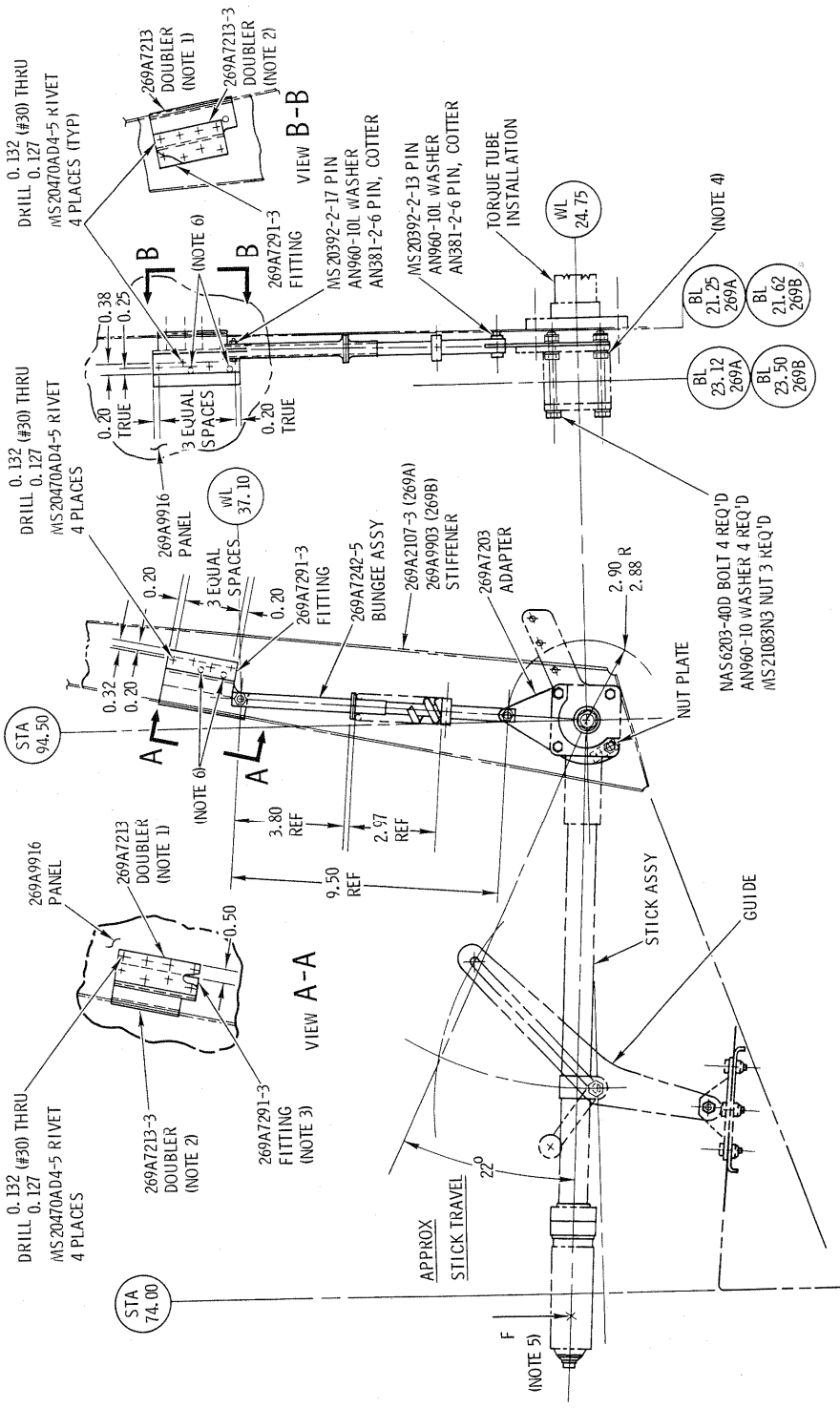
1. For 269A/A-1 and TH-55A helicopters, and for 269B helicopters with auxiliary fuel system, removal of fuel tank (LH side) is recommended to facilitate installation of new collective bungee. (Refer to Section 5 of Basic HMI and applicable HMI Configuration Supplement.)
2. Use of a special bungee spring compression tool is recommended during removal and installation of collective bungee assembly. (See Figure 2 for field fabrication details.)

- a. Remove existing collective bungee assembly, per Section 8 of B Basic HMI; use special tool or equivalent to compress spring and remove cotter pin.
- b. Drill out rivets securing existing bungee attach fitting to stiffener and to aft side of fuselage seat back panel assembly.
- c. Remove bolts, washers and nuts (4 places) securing pitch control housing assembly. Install new PN 269A7203 adapter to housing with new bolts, washers and nuts (4 places) as shown. (See Figure 1.)
- d. Install new PN 269A7291-3 attach fitting, and new PN 269A7213 and PN 269A7213-3 doublers, to seat back panel and stiffener per dimensions shown in Figure 1. Install all rivets with zinc chromate primer.
- e. Install new PN 269A7242-5 bungee assembly; use special tool or equivalent to compress spring and install cotter pin. (See Figure 1.)
- f. Rig cyclic and collective controls, per Section 8 of Basic HMI; perform rigging flight check and adjust collective bungee as required.
- g. Prime and paint newly installed components to color match helicopter exterior finish, if desired.
- h. Reinstall fuel tank and other removed components, if applicable.
- i. Record installation of new PN 269A7242-5 collective bungee assembly, per this Notice and M10123 kit installation, in Components Record of helicopter Log Book.

WEIGHT AND BALANCE DATA

Weight and balance not affected

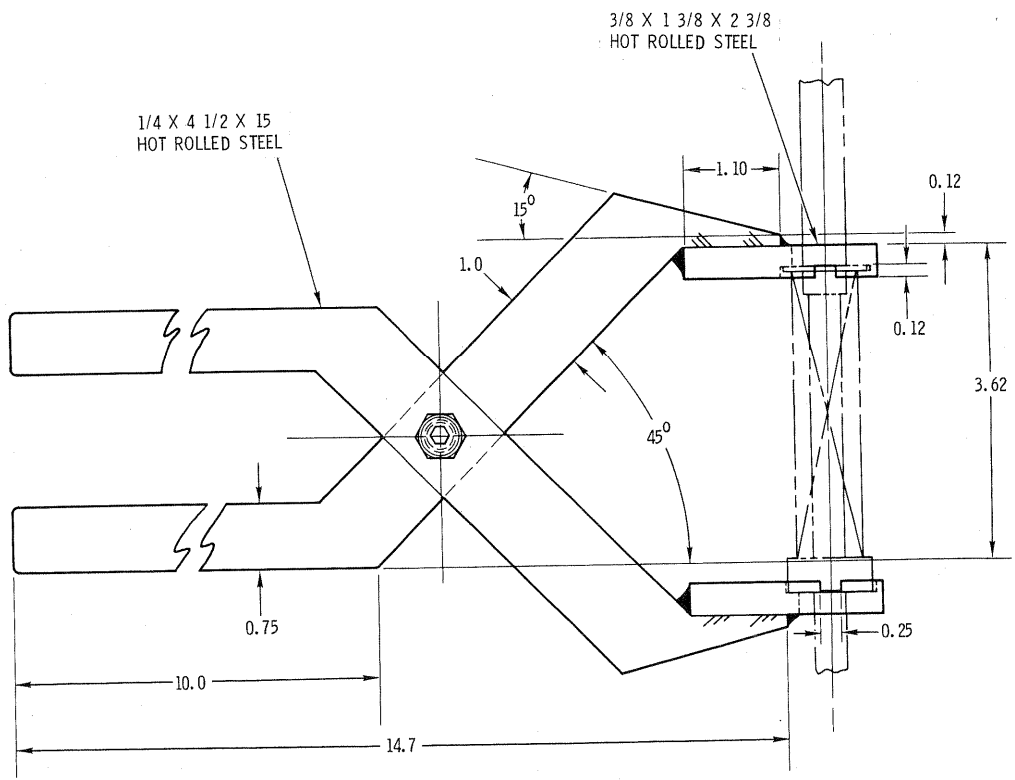
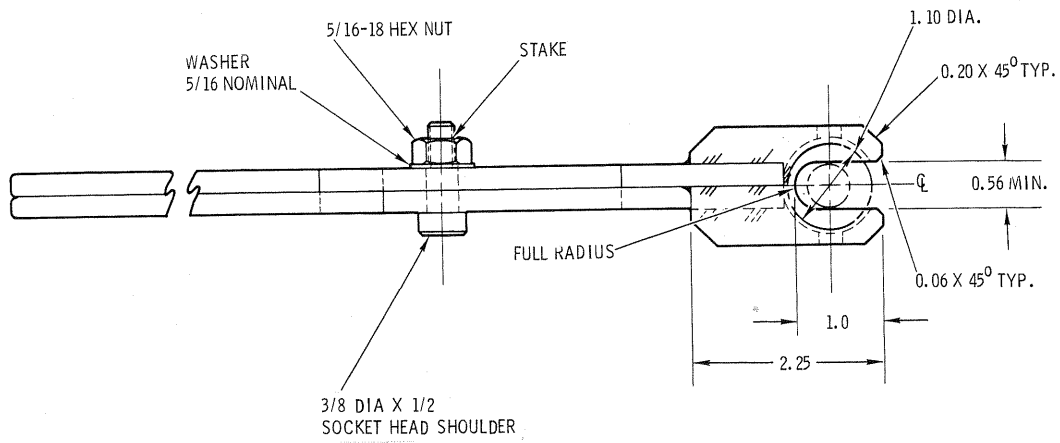
The resultant alteration to affected models as described by the installation procedure in this Notice has been shown to comply with Federal Aviation Regulations and is FAA approved.



- NOTES:**
1. INSTALL 269A7213 DOUBLER ON INTERIOR SIDE OF SEAT BACK PANEL.
 2. INSTALL 269A7213-3 DOUBLER ON INBOARD SIDE OF STIFFENER.
 3. INSTALL 269A7291-3 FITTING ON EXTERIOR SIDE OF SEAT BACK PANEL AND OUTBOARD SIDE OF STIFFENER.
 4. FOR BUNGEE INSTALLATION ON MODELS 269A & 269A-1 WHERE THE COPILOTS COLLECTIVE STICK ASSY IS NOT INSTALLED, THE SHORTER NAS6203-5D BOLT SHALL BE USED (4 PLACES).
 5. ESTIMATED HAND FORCE $F = 20LB$.
 6. OPEN HOLES PERMISSIBLE IN SEAT BACK & STIFFENER DUE TO DRILLED OUT RIVETS.

Figure 1. Bungee installation, Kit PN M10123 - Collective pitch stick

38-5764



88-545

Figure 2. Field fabrication of collective control bungee tool, PN 269A7242-5-80901