



**HUGHES
SERVICE INFORMATION
NOTICE**

NOTICE NO. N-20

DATE February 20, 1967

PAGE 1 OF 3

SUBJECT: FIELD INSTALLATION - SPRING, LONGITUDINAL
BUNGEE

MODELS AFFECTED: 269A Helicopter Serial No's. 0011 and subsequent
269A-1 Helicopter Serial No's. 0001 through 0041

TIME OF COMPLIANCE: At owners and operators discretion.

PURPOSE: To provide more effective cyclic longitudinal trim control, i. e., reduced backlash, improved response. Lack of above is noted primarily with aircraft equipped with B 1145 rotor blades.

Reference

269A/A-1 Handbook of Maintenance Instructions

PARTS REQUIRED

<u>NOMENCLATURE</u>	<u>PART NUMBER</u>	<u>QUANTITY</u>
Kit - Spring, Longitudinal Bungee	M10013	1

TOOLS AND EQUIPMENT

Commercial
Commercial

MATERIALS

Zinc Chromate
Paste

- a. Remove cover assembly between seats by loosening camlock fasteners.
- b. Snap out seat cushion assemblies with an upward motion.
- c. Remove bolt, nut, washer, bushing and cotter pin connecting aft end of 7411 rod assembly to bellcrank. (Figure 1)
- d. Replace existing bolt with 7513 eye bolt and install with washer, bushing, nut and cotter pin.
- e. Drill 0.10 inch diameter hole in lower flange of 2099 intercostal and touch up with zinc chromate paste.
- f. Hook 7168 bungee spring in eye bolt and to intercostal.
- g. Inspect spring installation.
- h. Check flight controls for freedom of movement.
- i. Reinstall seat cushion and cover assemblies.

Weight & Balance Data

Weight and balance data not affected.

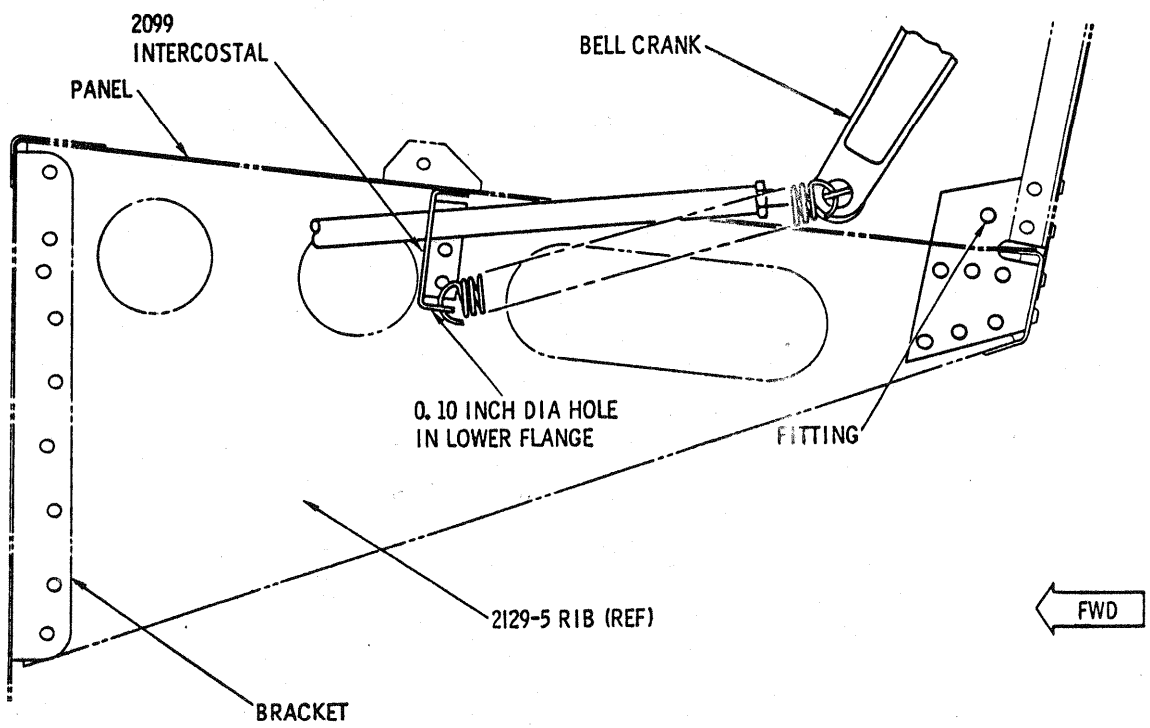
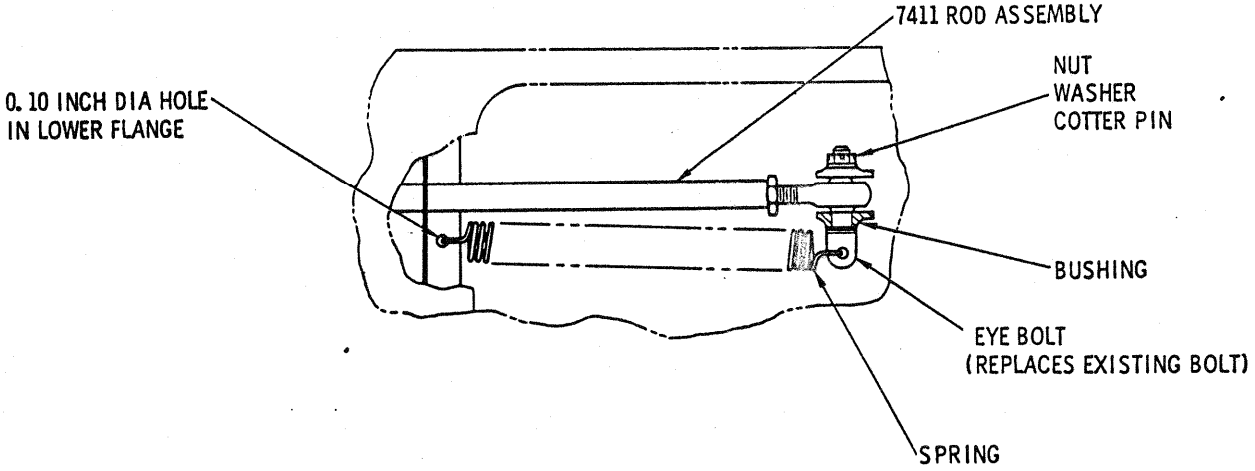


Figure 1. Longitudinal Bungee Spring

