



HUGHES SERVICE INFORMATION NOTICE

NOTICE NO N-21
DATE August 23, 1967
PAGE 1 OF 4

SUBJECT: BELLCRANK INSTALLATION - SERVO FUEL
INJECTOR THROTTLE CONTROL

MODELS AFFECTED: 269A (TH55A) Helicopter Serial Nos. 0315 thru 0667.

TIME OF COMPLIANCE: At owners and operators discretion.

PREFACE: The information given in this Service Information Notice includes a procedure for modifying the existing bellcrank linkage to (1), preclude excess friction and (2) improve operation of the RPM governor.

Reference

269A/A-1 Handbook of Maintenance Instructions (with TH55A Addendum)

Parts List

<u>Nomenclature</u>	<u>P/N</u>	<u>Qty.</u>	<u>Description</u>
Bellcrank Ass'y.	M10014-3	1	Make from existing 269A 8418-1 bellcrank ass'y.

<u>Nomenclature</u>	<u>P/N</u>	<u>Qty.</u>
Sleeve	269A8445-3	2
Bushing	NAS77A-3-13	2
Pin, cotter	AN381-15-5	1
Pin, cotter	AN381-27	2

Tools and Equipment

Welding Equipment - metallic arc or heliarc	Commercial
Grinder - portable or machine	Commercial
Drill - motor	Commercial
Bit, drill - 0.190/0.194 in. dia.	Commercial
Bit, ream - 0.2495/0.2506 in. dia.	Commercial
Bit, ream - 0.3120/0.3130 in. dia.	Commercial

- a. Remove attaching hardware holding bellcrank (20) to adapter (18). Refer to Figure A4, TH55A HMI Addendum.
- b. Disconnect cable assembly (26) from arm assembly.
- c. Disconnect tie rod (12) from arm assembly.
- d. Remove tie rod from bellcrank.
- e. Line ream two existing holes in line in bellcrank to 0.3120/0.3130 inch diameter maximum, per Figure 1.
- f. Press fit NAS77A-3-13 bushings into holes and line ream finish of bushings to 0.2495/0.2505 inch diameter maximum.
- g. Weld closed one hole at end of tie rod; grind flush and redrill to 0.190/0.194 inch diameter maximum.
- h. Install tie rod (at redrilled end) to bellcrank (at end with new bushings) using bolt, two 8445-3 sleeves, washer, nut and 381-15-5 cotter pin.
- i. Install adapter to bellcrank, using existing hardware and AN381-27 cotter pin.
- j. Install bellcrank to cable assembly, using existing hardware and AN281-15-5 cotter pin.

k. Install tie rod to arm assembly, using existing hardware and AN381-27 cotter pin.

1. Check installation for smooth operation of bellcrank linkage on throttle mechanism.

m. Check throttle operation for proper travel from stop to stop.

NOTE

Re-rig throttle per HMI instructions, if discrepancies are noted per step m.

Weight and Balance Data

Weight and balance not affected.

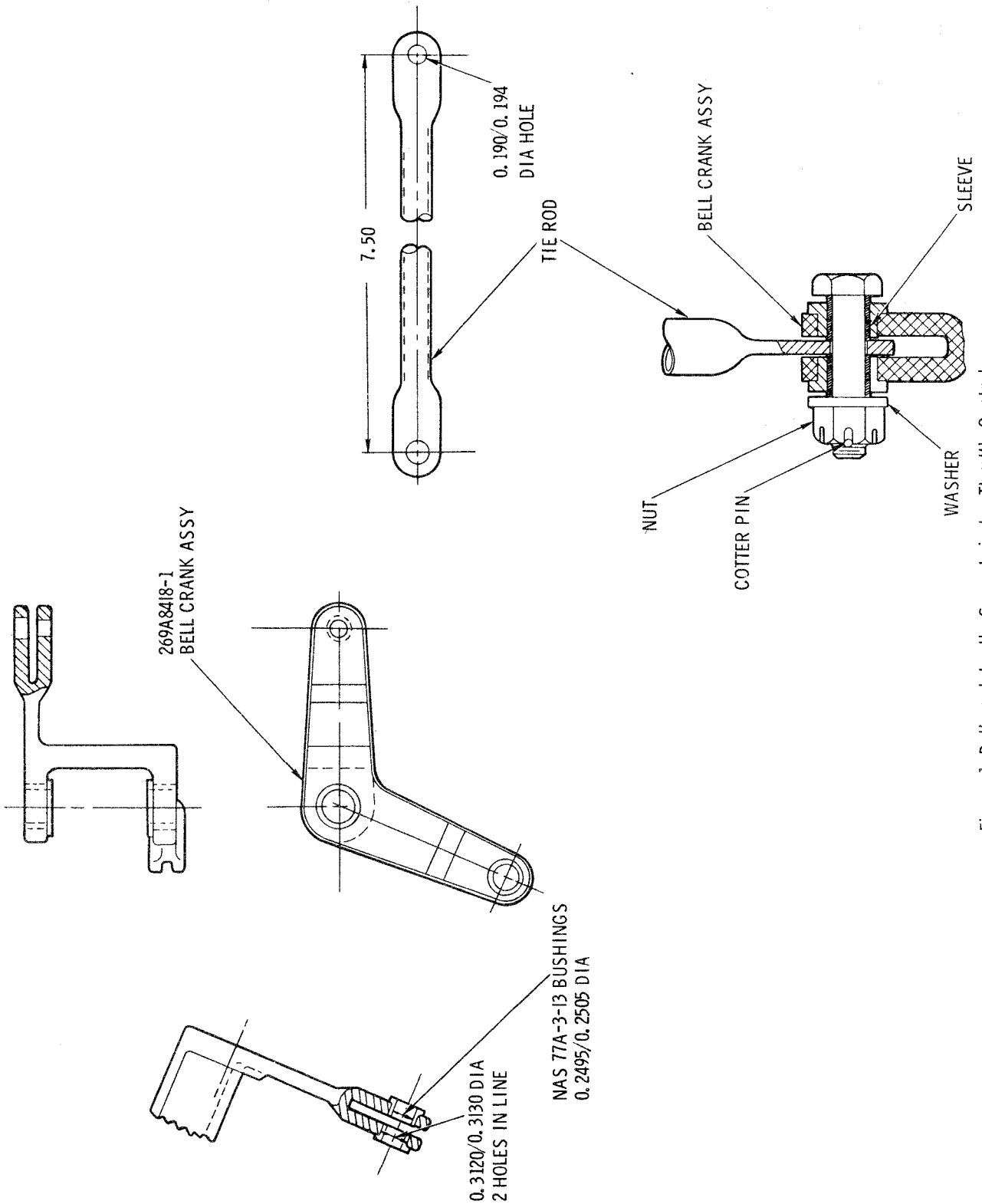


Figure 1. Bellcrank Instl. - Servo Injector Throttle Control