



**HUGHES
SERVICE INFORMATION
NOTICE**

NOTICE NO. N-22

DATE February 22, 1967

PAGE 1 OF 3

SUBJECT: REVERSE INSTALLATION - COLLECTIVE BUNGEE ASSEMBLY

MODELS AFFECTED: Model 269A, TH-55A, 269A-1, and 269B Helicopters

TIME OF COMPLIANCE: At owners and operators discretion.

PURPOSE: To provide installation which will reduce moisture accumulation and icing conditions in collective bungee assembly during cold weather operations.

MATERIAL

Iridite

Commercial

Reference

**269A/A-1 Handbook of Maintenance Instructions
269B Handbook of Maintenance Instructions**

- a. Position collective pitch control stick full up to relieve spring tension.**
- b. Remove attaching pins, washers, cotter pins and collective bungee assembly from aircraft.**

NOTICE NO. N-22
DATE February 20, 1967
PAGE 2 OF 3

- c. Remove pin, washer, cotter pin, spring and retainer from 7245 tube. (Per Figure 1)
- d. Using portable grinder, band saw or hacksaw, rework slot in 7245 tube to increase slot length to 0.90 inch and slot width to 0.130 inch.
- e. Touch up reworked area in slot with iridite.
- f. Install retainer, pin, washer and new AN381-2-6 cotter pin on 7245 tube.

NOTE

Head of pin faces to rear when installed on aircraft.

- g. Assemble spring and 7246 tube (larger diameter) on 7245 tube and install collective bungee assembly on aircraft using pins, washers and new AN381-2-6 cotter pins.

NOTE

New installation is reverse of original collective bungee installation, i. e. 7245 tube (with reworked slot) is now attached to arm of 7201 torque tube installation.

- h. Check installation for discrepancies.
- i. Perform operational check of collective pitch control and bungee assembly.

Weight & Balance Data

Weight and balance data not affected.

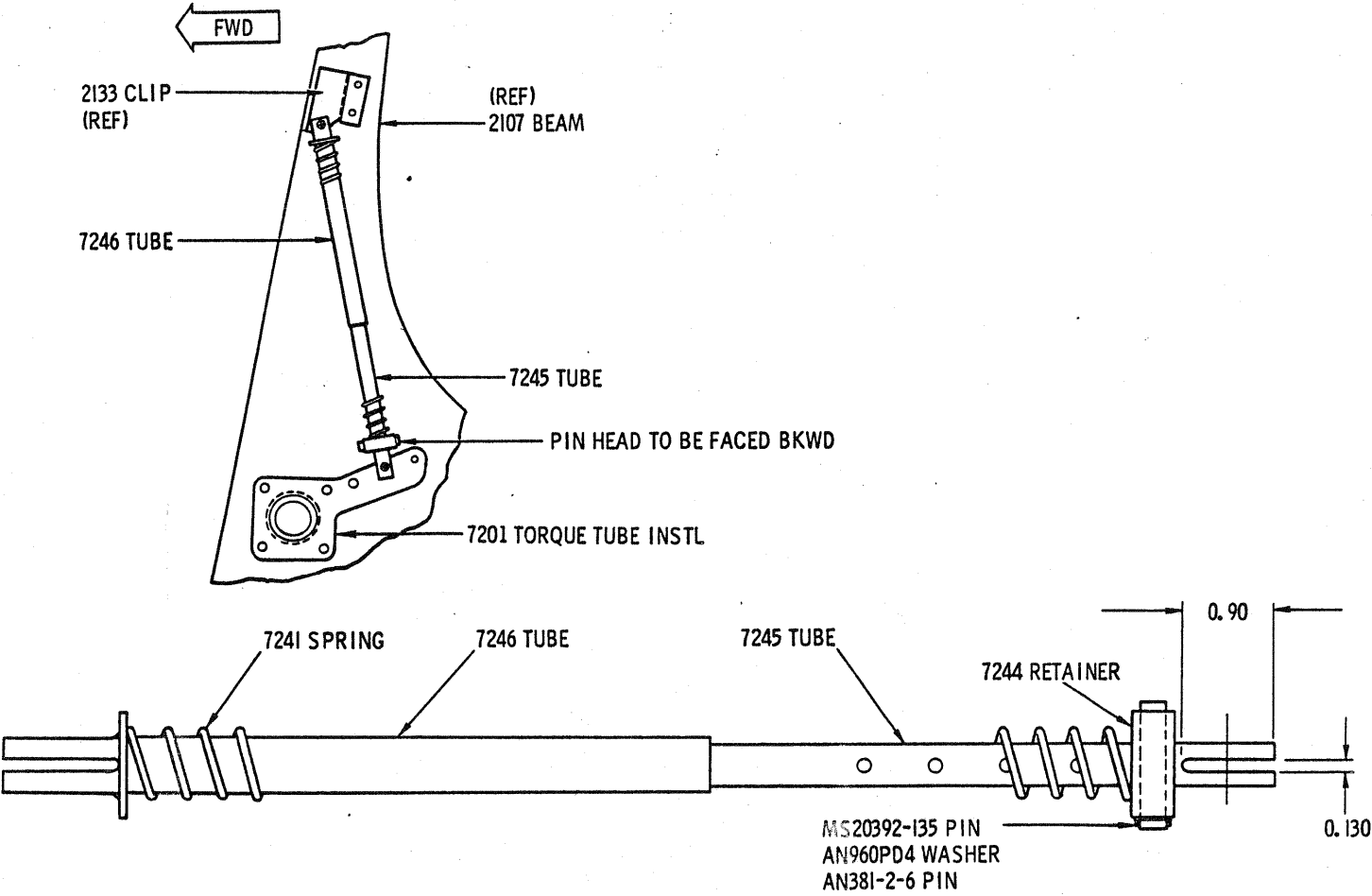


Figure 1. Collective Bungee Spring - Reverse Installation

