



SCHWEIZER SERVICE NOTICE

NOTICE NO. N-33.2*

DATE Dec. 13, 1967

PAGE 1 OF 11

*Supersedes Service Information Notice
N-33.1

MANDATORY

MANDATORY

MANDATORY

SUBJECT:

**KIT INSTALLATION - CABIN SEALING RE: CARB
MONOXIDE INGESTION**

MODELS AFFECTED:

269A Helicopter Serial Nos. 0011 thru 0713
269A-1 Helicopter Serial Nos. 0001 thru 0041
269A-2 Helicopter Serial No. 0001
269B Helicopter Serial Nos. 0001 thru 0295

TIME OF COMPLIANCE:

Mandatory within next 25 hours of operation, unless
already accomplished.

PURPOSE:

The information given in this Service Information Notice lists a procedure for kit installation to seal the aircraft cabin, thus providing additional protection against the possibility of ingestion of carbon monoxide gas.

Reference

269A/A-1/TH-55A Handbook of Maintenance Instructions, Reissued 15 Dec. 19
269B Handbook of Maintenance Instructions, Reissued 15 Aug. 67

Tools & Equipment

Drill, portable	Commercial
Clamps - "C" (4)	Commercial
Cloth, soft flannel	Commercial

Bar (■) denotes portion of text superseded

Materials

Solvent - Ethylene Dichloride	Commercial
Sandpaper - #400	Commercial
Sealant - Zinc Chromate Paste, or equivalent	Commercial

Parts List

<u>Nomenclature</u>	<u>Part No.</u>	<u>Model Affected</u>	<u>Qty.</u>	<u>Mfr.</u>
Kit Installation - Cabin Sealing, Carbon Monoxide	M10022-1	269A 0001-0713; 269A-2 0001	1	HTC-AD
	M10022-3	269B 0001-0295	1	HTC-AD
	M10022-5	269A-1 0001-0041	1	HTC-AD

I. M10022-1 KIT INSTALLATION - Applicable to referenced 269A and 269A-2 helicopters.

II. INSTALLATION INSTRUCTIONS. The following lists a procedure for sealing aircraft cabin.

a. Remove 2290 lower forward fairing from aircraft; make cutout in fairing per dimensions, View I, Figure 1.

NOTE

Loosen clamp and remove duct attached to carburetor air induction housing, before removing fairing.

b. Remove cabin floor carpeting; make cutout in 2149 floor panel, per dimensions, View II, Section A-A, Figure 1.

NOTE

For 269A Helicopter Series Nos. 0011-0315 and 269A-1 Helicopter Serial Nos. 0001-0018 with 4201 or 4770 exhaust heater installed: Remove 4207 or 4746 plenum and make cutout in 2149 floor panel, per View I, Section A-A, Figure 5. Also make cutout in bottom of plenum; per View II, Figure 5; and rework 2213 air scoop assembly by removing portion of deflector, per dimensions shown in View III, Section B-B, Figure 5.

c. Position 2213 air scoop assembly on underside of floor panel; mark and drill 0.128/0.132 in. dia. holes; install air scoop with AD44BS pop rivets or equivalent; seal area between bead and scoop, using zinc chromate paste.

NOTE

For 269A Helicopter Serial Nos. 0011-0315 and 269A-1 Helicopter Serial Nos. 0001-0018 with 4201 or 4770 exhaust heater installed: Reinstall plenum with existing hardware and seal area between beads and plenum assemblies, using zinc chromate paste or rubber base sealant. (Refer to View I, Section A-A, Figure 5)

- d. Open upper and lower air vents on left and right hand 2804 door panels; position vent openings to face forward and upward.
- e. Install 2804-15 stops to 2804 doublers on door panels, per Figure 2; bond stops to doublers by following steps:
1. Sand areas of stops and doublers to be bonded; use #400 sandpaper.
 2. Clean and dry areas by wiping with soft flannel cloth; if necessary, wet cloth with detergent solution; dry parts thoroughly.
 3. Coat evenly one of two bonding surfaces with ethylene dichloride; clamp bonding surfaces together with sufficient pressure to force out air bubbles.

NOTE

Excess ethylene dichloride may mar finish of parts.

4. Readjust clamps to minimum pressure required to hold parts in place; allow clamps to remain in place twenty (20) minutes and then remove.

CAUTION

Good ventilation is required in area where ethylene dichloride is used.

- f. Insert #19 corks into both ends of 7333 rudder pedal tube located under floor panel, per Figure 2.

NOTE

For dual control rudder pedal installation, install #19 corks at out-board ends of 7333 tubes.

- g. Reinstall cabin floor carpeting and 2290 lower forward fairing.
- h. Check cabin sealing installation for discrepancies.
- i. Perform operational check of installation.

Weight & Balance Data

M10020 Air Scoop Assembly 0.15 lbs. at 48.5 in. arm

III. M10022-3 KIT INSTALLATION - Applicable to referenced 269B helicopters.

IV. INSTALLATION INSTRUCTIONS. The following lists a procedure for sealing aircraft cabin.

a. Remove 2290 lower forward fairing from aircraft; make cutout in fairing, per dimensions, View I, Figure 1.

NOTE

Loosen clamp and remove duct attached to carburetor air induction housing, before removing fairing.

b. Remove carpeting on cabin floor.

c. Make cutout in 9926 floor panel under instrument console, per dimensions, View III Section B-B, Figure 1.

d. Position 2213-5 air scoop on underside of floor panel; mark and drill 0.128/0.132 in. dia holes in floor panel; install air scoop with AD41BS pop rivets or equivalent

e. Install 2804-15 stops to left and right hand door panels; per instructions steps d. and e. Paragraph II.

f. Install #19 corks in 7333 rudder pedal tube located under floor panel; per Figure 2.

g. Install M10022-7 doubler with correct size hole to inside of existing hole of 4031-5 control boot, per Figure 3 detail A; use MP-500 cement.

NOTE

Cut doubler per Figure 3 to simplify installation; seal doubler with cloth tape after installation.

h. Seal with zinc chromate paste (alt. cloth tape) all gaps remaining in 4301-5 boot as a result of penetrations by transmission housing, control rods, electrical cables, etc.

i. Seal with Sta-Bond HT4-HM1 all gaps occurring where 2230 frame assembly projects through 9924 firewall to mate with 9902 bracket on the 9900 seat assembly per Figure 4, Detail A.

j. Seal with zinc chromate paste all gaps remaining after installation at the following places:

1. In area where console lines and cables pass through cutout in 9926 cabin floor panel assembly under instrument console.

2. In area of floor where lines and cable pass through grommets in 9912 cabin floor panel assembly forward of seat panel assembly.

3. In area of 9916 back fuselage panel where lines and cables pass through curtained cutouts.

k. Seal with Sta-Bond all gaps occurring at junctions of 9924 firewall, 9916 seat panel and 9904 back channel, per Figure 4, Detail C.

l. Seal with zinc chromate paste or Sta-Bond all gaps occurring at junction of 9912 floor, 2253 gusset and 2259 frame, per Figure 4, Detail B.

- m. Reinstall lower forward fairing and floor carpeting.
- n. Check cabin sealing installation for discrepancies.
- o. Perform operational check of cabin sealing installations.

Weight & Balance Data

M10020-3 Air Scoop 0.08 lbs. at 49.3 in. arm

V. M10022-5 KIT INSTALLATION - Applicable to referenced 269A-1 helicopters.

VI. INSTALLATION INSTRUCTIONS - The following lists a procedure for sealing aircraft cabin:

- a. Perform steps a. thru f., Paragraph II, per M10022-1 installation instructions.
- b. Install M10022-9 doubler with correct size hole to inside of existing hole of 4031-15 control boot, per Figure 3; use MP500 cement or equivalent.

NOTE

Cut doubler per Figure 3 to simplify installation; seal doubler with cloth tape after installation.

- c. Seal with zinc chromate paste or cloth tape all gaps remaining in 4031-15 boot as a result of penetrations by transmission housing, control rods, electrical cords, etc.
- d. Seal with Sta-Bond all gaps occurring where 2230 frame assembly projects through 2261 firewall to mate with 2260 bracket on the 2100 seat assembly, per Figure 4, Detail A.
- e. Seal with zinc chromate paste all gaps remaining after installation at the following places:
 - 1. In area where console lines and cables pass through cutout in 2149 panel assembly adjacent to instrument console cabin floor.
 - 2. In floor area where lines and cables pass through grommets in 2254 cabin floor panel assembly, adjacent to seat panel assembly.
 - 3. In area of 2103 back fuselage panel where lines and cables pass through curtained cutouts.
- f. Seal with Sta-Bond all gaps occurring at junction of 2261 firewall, 2103 seat panel, and 2104 back channel, per Figure 4, Detail C.

NOTICE NO. N-33.2
DATE Dec. 13, 1967
PAGE 6 OF 11

g. Seal with zinc chromate paste or Sta-Bond all gaps occurring at junction of 2254 floor, 2253 gusset and 2259 frame, per Figure 4, Detail B.

h. Reinstall cabin floor carpeting and 2290 lower forward fairing.

i. Check cabin sealing installation for discrepancies.

j. Perform operational check of installation.

Weight & Balance Data

M10020 Air Scoop Assembly 0.15 lbs. at 48.5 in. arm

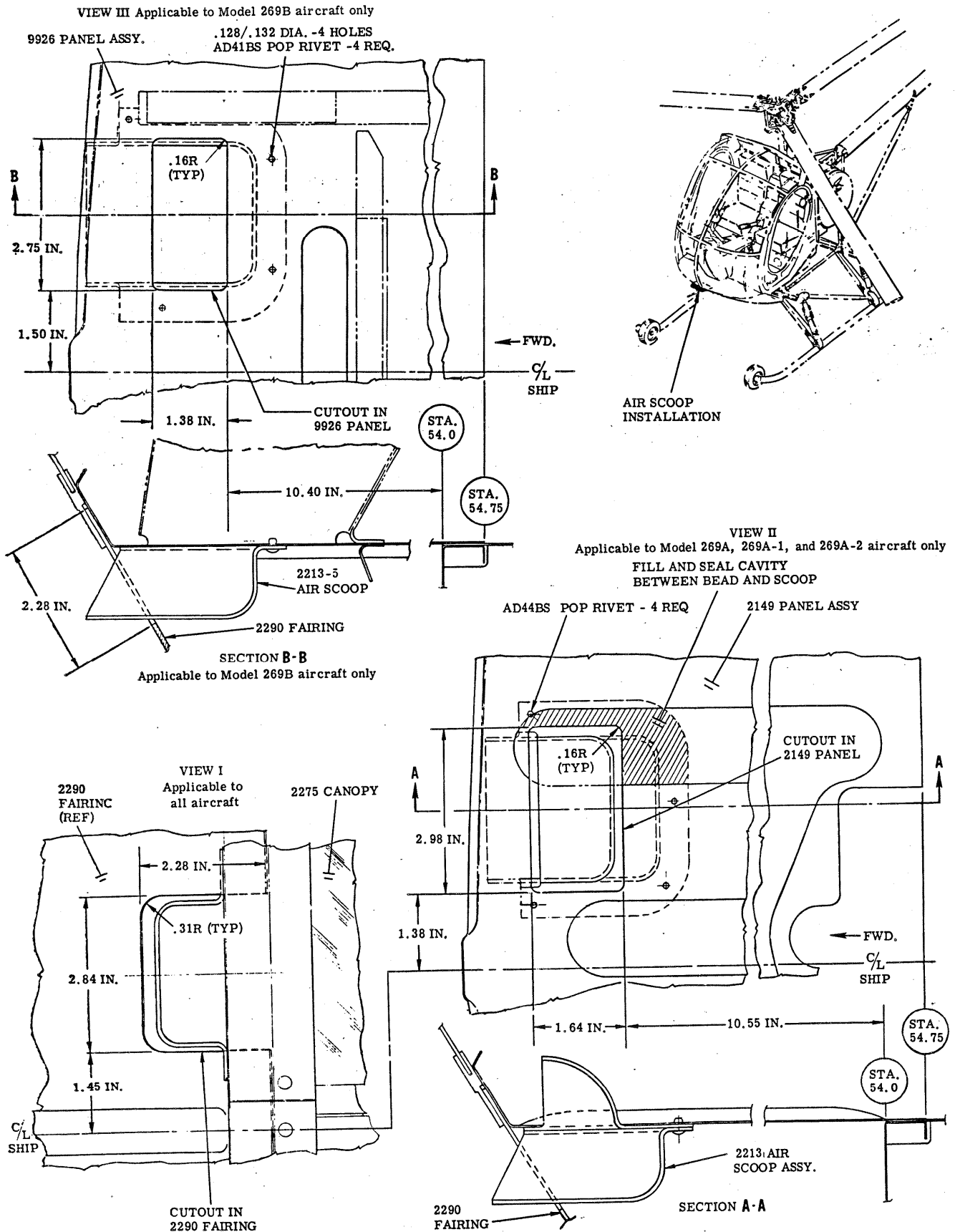


Figure 1. Cabin Sealing Installation

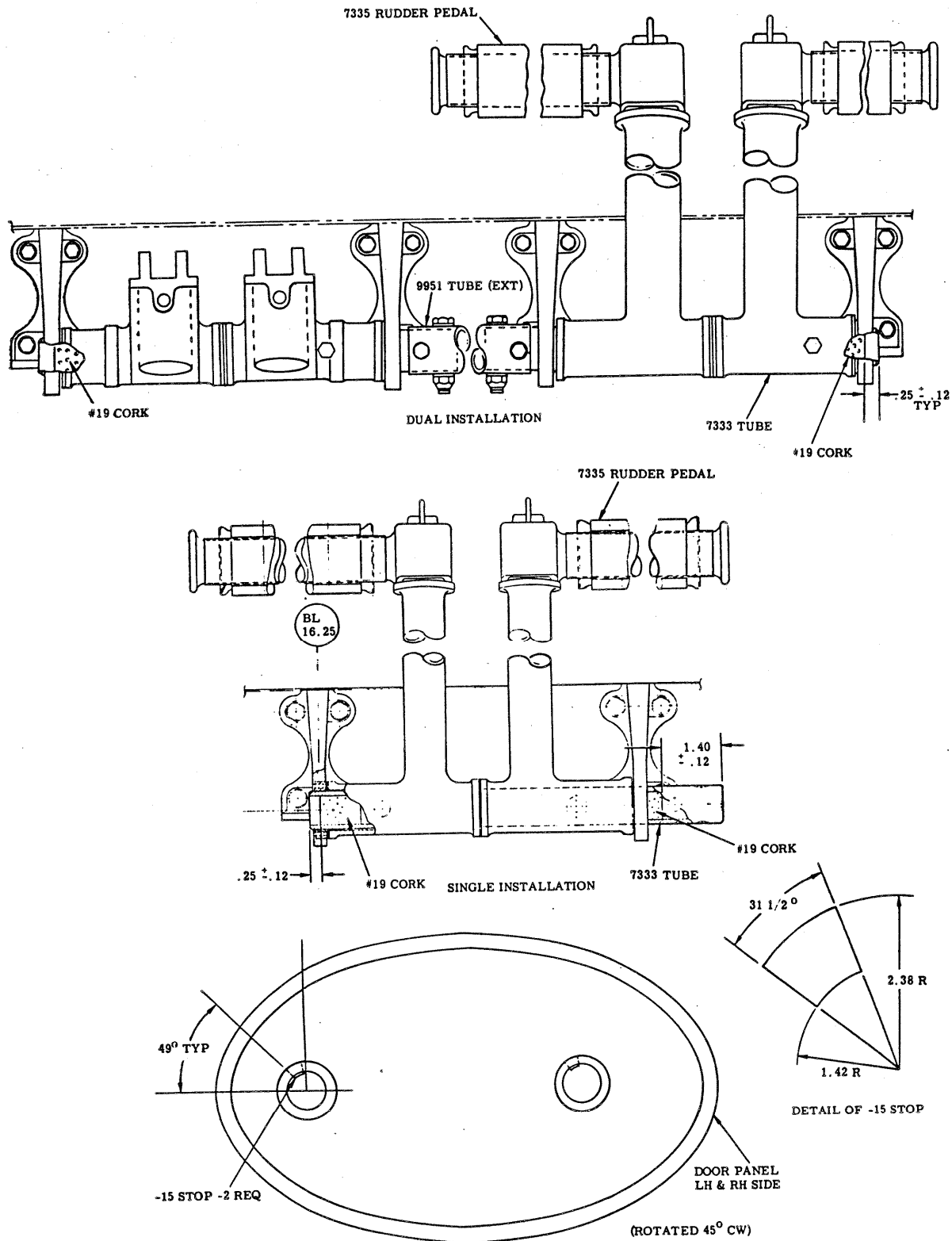
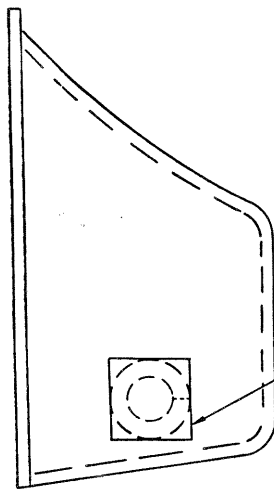
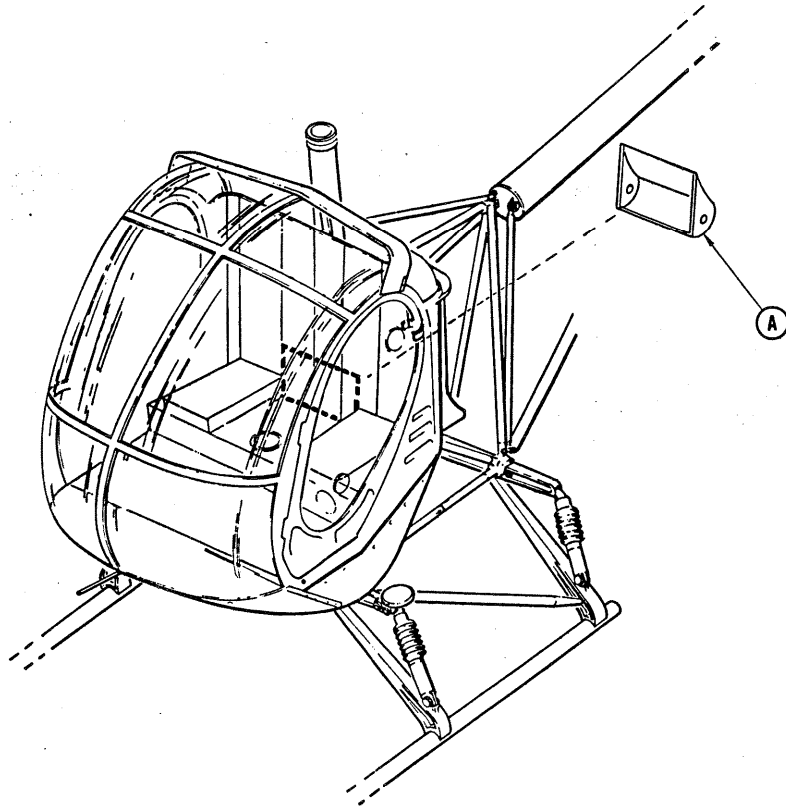


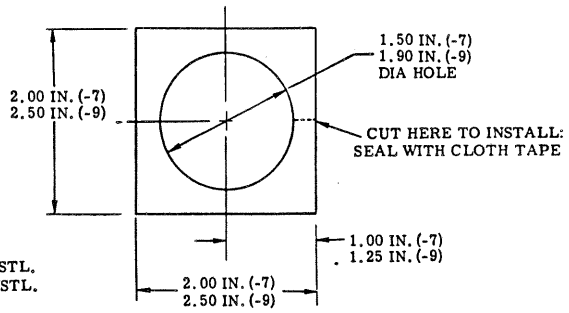
Figure 2. Cabin Sealing Installation



-7 DOUBLER FOR -3 INSTL.
 -9 DOUBLER FOR -5 INSTL.

4031-5 BOOT
 4031-15 BOOT

DETAIL (A)



DETAIL OF DOUBLER

Figure 3. Cabin Sealing Installation

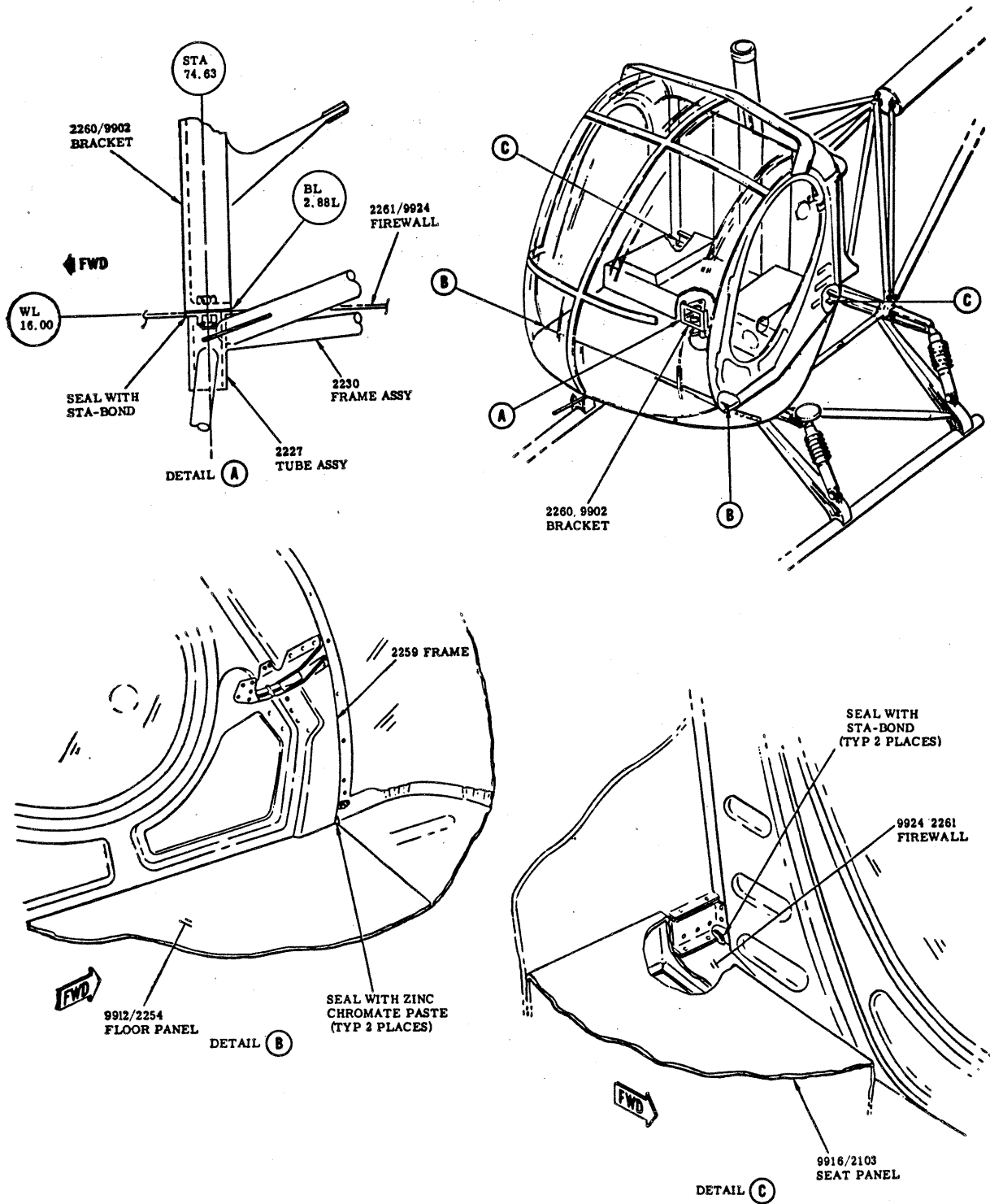


Figure 4. Cabin Sealing Installation

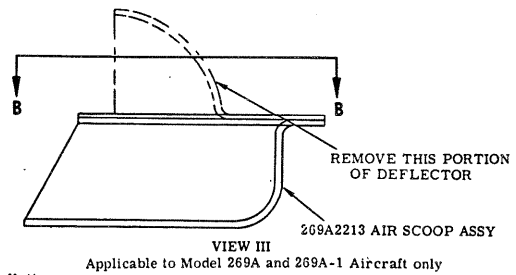
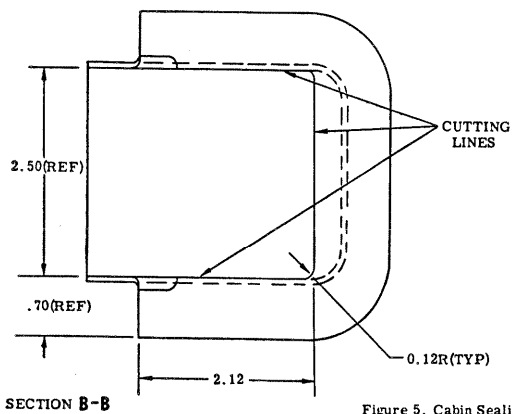
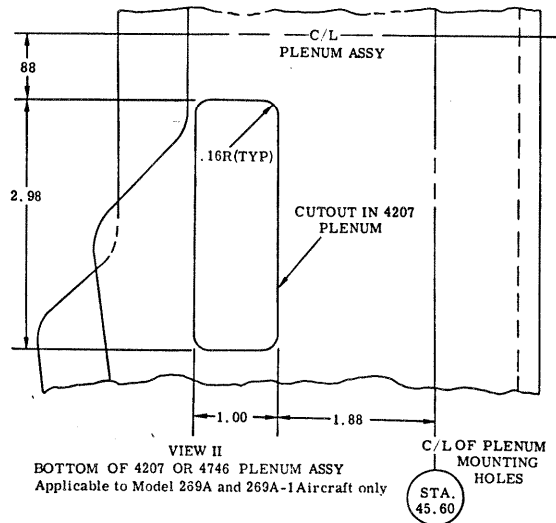
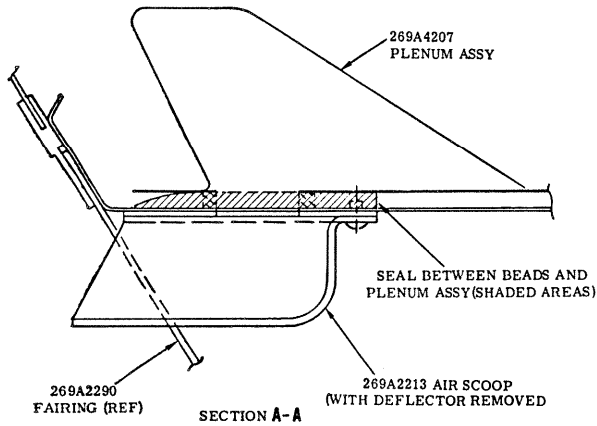
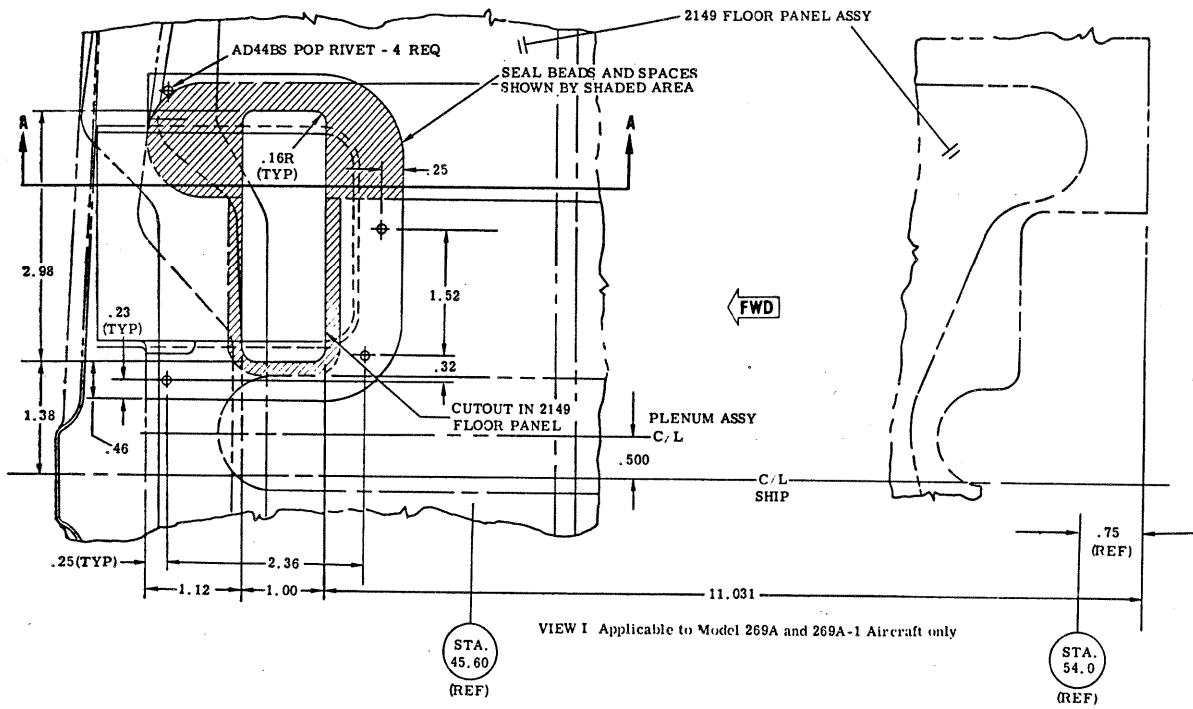


Figure 5. Cabin Sealing Installation

