



HUGHES SERVICE INFORMATION NOTICE

NOTICE NO. N-56.4*

DATE 6 May 1981

PAGE 1 OF 3

Supersedes Service Information
Notice No. N-56.3, dated
10 Feb 1972

MANDATORY

MANDATORY

MANDATORY

SUBJECT: INSPECTION - MAIN ROTOR MAST

MODELS AFFECTED: All Model 269A, 269A-1, 269B and 269C Helicopters

TIME OF COMPLIANCE: Part I shall be accomplished at next 100 hours of helicopter operation and each 100 hour interval thereafter.

Part II shall be accomplished at each 1200 hour interval of helicopter operation.

Shall be accomplished prior to next flight following main rotor blade tailboom strike or sudden stoppage of drive system.

PREFACE: The information given in this Service Information Notice lists an inspection procedure to ensure that collective pitch mixer bellcrank attaching lugs on the main rotor mast are free of cracks. This revision deletes the 50-hour and 100 hour dye-penetrant inspection and adds requirements for a visual inspection at 100 hours and a dye-penetrant inspection at 1200 hours. These revisions are made in accordance with FAA Docket No. 49-WE-26-AD, Amendment 39-4056, which rescinds Amendment 39-925 (35 FR 760) AD 70 02 07, effective 9 March 1981. The above revised inspections will be reflected in the next revision of 269 Series HMI Appendix B.

Reference

269 Series - Basic Handbook of Maintenance Instructions, Reissued 1 April 1980
269 Series - HMI Appendix B, Reissued 1 April 1980

(|) Bar denotes portion of text added or revised

Customer Service Department

MATERIALS

Kit-Dye-penetrant

Commercial

PART I PROCEDURE - MAIN ROTOR MAST VISUAL INSPECTION

a. Perform visual inspection for cracks in two main rotor mast lugs used for attaching collective pitch mixer bellcrank. Inspect 100 percent area of lugs, including fillets to main rotor mast. Disassembly of components is not required. (Refer to Figure 1, view A-A and detail B.)

CAUTION

If cracking is noted, replace main rotor mast prior to next flight, per Section 13 of Basic HMI.

b. Record compliance with Part I of this Service Information Notice in Compliance Record of helicopter Log Book.

PART II PROCEDURE - MAIN ROTOR MAST DYE-PENETRANT INSPECTION

a. Perform dye-penetrant inspection for cracks in two main rotor mast lugs used for attaching collective pitch mixer bellcrank. Inspect 100 percent area of lugs, including fillets to main rotor mast. (Refer to Figure 1, view A-A and detail B.)

NOTE

Remove paint from mast lugs for dye-penetrant inspection; repaint lugs, per Basic HMI. Disassembly of components not required.

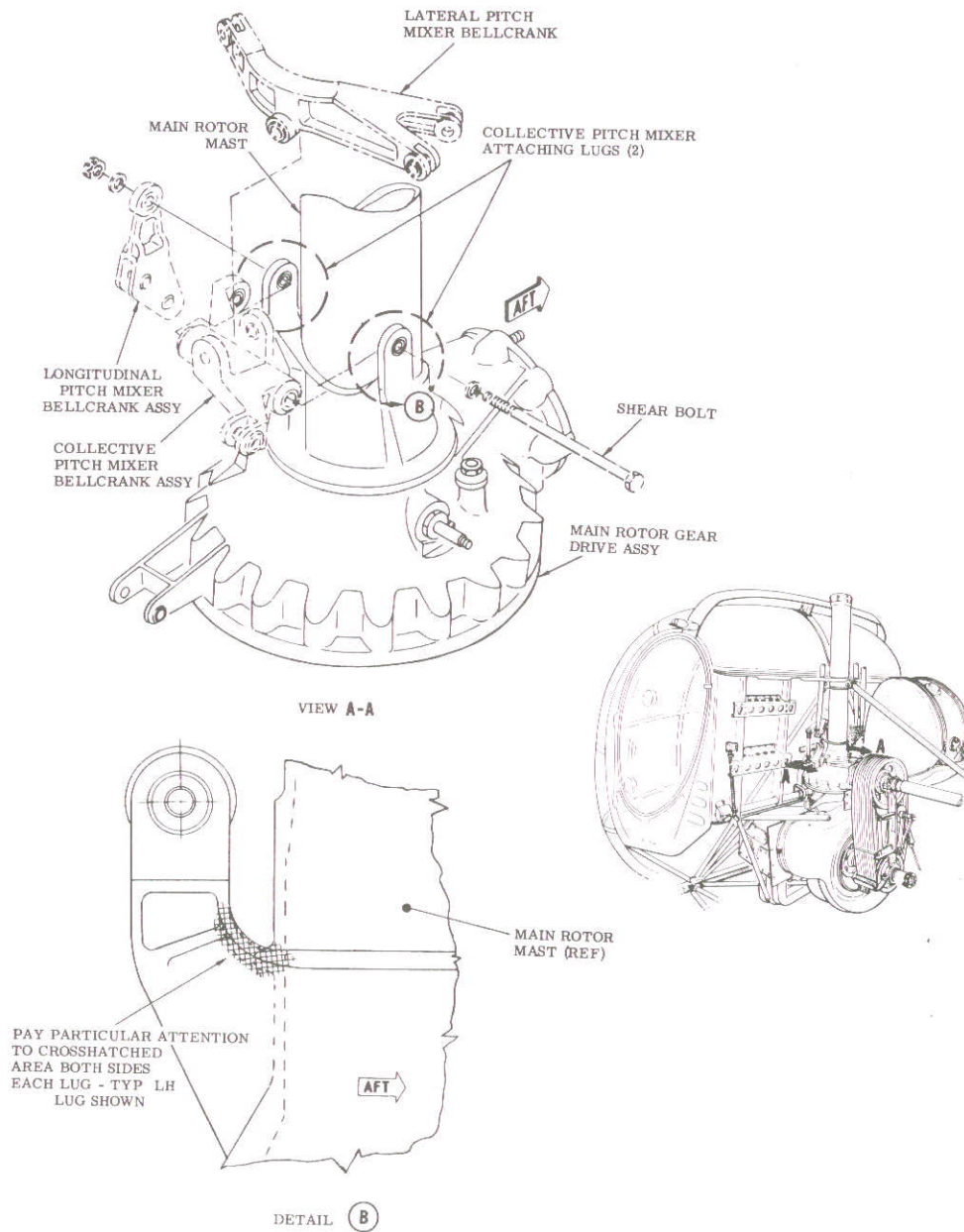
CAUTION

If cracking is noted, replace main rotor mast prior to next flight, per Section 13 of Basic HMI.

b. Record compliance with Part II of this Service Information Notice in Compliance Record of helicopter Log Book.

WEIGHT AND BALANCE DATA

Weight and balance not affected.



88-056

Figure 1. Inspection-Main Rotor Mast Assembly

REFERENCE SHEET

SERVICE INFORMATION NOTICES AND LETTERS

Action Reference: When performing 100-hour periodic inspection, refer to Service Information Notice No. N-56.4 for main rotor mast inspection.

HMI Reference: Insert this sheet in 269 HMI Appendix B, Section 2, Table B-2, Periodic Inspection, page 2-6.

This reference sheet shall be kept as a part of the manual until the data is incorporated at the next revision of HMI Appendix B. (See Service Information Summary, HMI Appendix B, page i)

REFERENCE SHEET

SERVICE INFORMATION NOTICES AND LETTERS

Action Reference: When performing 300-hour periodic inspection, refer to Service Information Notice No. N-56.4 for main rotor mast inspection.

HMI Reference: Insert this sheet in 269 HMI Appendix B, Section 2, Table B-2, Periodic Inspections, page 2-8.

This reference sheet shall be kept as part of the manual until the data is incorporated at the next revision of HMI Appendix B. (See Service Information Summary, HMI Appendix B, page i)

REFERENCE SHEET

SERVICE INFORMATION NOTICES AND LETTERS

Action Reference: When performing 1200-hour special inspection, refer to Service Information Notice No. N-56.4 for main rotor mast inspection.

HMI Reference: Insert this sheet in 269 HMI Appendix B, Section 2, Table B-2, Special Inspections, page 2-14.

This reference sheet shall be kept as a part of the manual until the data is incorporated at the next revision of HMI Appendix B. (See Service Information Summary, HMI Appendix B, page i)

