



HUGHES SERVICE INFORMATION NOTICE

NOTICE NO N-62.1*
DATE August 4, 1971
PAGE 1 OF 6

* Supersedes Notice No. N-62,
Dated Nov. 12, 1968

SUBJECT: KIT - FLOOR BEAM REINFORCEMENT

MODELS AFFECTED: 269A Helicopter Serial Nos. 0011 thru 0884
269A-1 Helicopter Serial Nos. 0001 thru 0041
269B Helicopter Serial Nos. 0001 thru 0471

TIME OF COMPLIANCE: At owners and operators discretion

PREFACE: The information given in this Service Information Notice lists a procedure for rework of the cabin floor beams aft of the rudder pedal controls. Installation of stiffeners increases the structural stability of the floor supports, and ensures adequate floor beam strength to withstand heavy foot or leg forces exerted by instructor pilot when overriding student operating rudder pedal controls.

Reference

269 Series Handbook of Maintenance Instructions, Revised 1 June 1971

PARTS LIST

<u>Nomenclature</u>	<u>Part No.</u>	<u>Qty.</u>	<u>Mfgr.</u>
Kit - Floor Beam Reinforcement	M10029	1	HTC-AD

(|) Denotes portion of text added or revised.

MATERIALS

Doubler	0.040 x 0.625 x 3.50	Alclad Sheet 2024-T3	Field Fabricate as required
---------	----------------------	----------------------	--------------------------------

TOOLS & EQUIPMENT

Gun - rivet	Commercial
Drill motor - portable	Commercial
Drill bit - #30 (0.1285 in. dia.)	Commercial
Fasteners - Cleco	Commercial

PROCEDURE

- a. Remove lower forward fairing; disconnect air filter inlet; cover carburetor/injector inlet to prevent entry of foreign objects.
- b. Remove landing light relay installed on 2252-3 beam (LH side) (Refer to Figure 1). or 2256 beam (RH side) (Refer to Figure 2). Also remove radio power supply unit, if presently installed on beams.
- c. Remove voltage regulator installed on 2256 beam (LH side). (Refer to Figure 1).
- d. Using #30 drill, remove rivets securing existing gussets at junction of 2124 and 2252-3 beams (2 places) and at junction of 2124 and 2256 beams (2 places).
- e. Using #30 drill, remove rivets securing 2307 stiffener to 2252-3 beam (LH side).
- f. Using #30 drill, remove straight row of 5 or 6 rivets (if presently installed) at mid span of both 2252-3 beams and both 2256 beams.
- g. Position -5 angle on outboard side of 2252-3 beam (RH side). Mark and drill rivet holes in beam and install angle with MS20470AD4 rivets.

NOTE

1. If required, trim cutout at aft end of -5 angle to match cutout in beam to provide sufficient clearance for rudder cables.
2. If existing rivets were removed from mid span of beam, fabricate doubler per Detail H; install doubler to inboard side of beam, as shown. Use MS20470AD5 rivets when installing both -5 angle and doubler to 2252-3 beam.

h. Position -3 angles on inboard side of 2256 beam (RH side) and 2252-3 beam (LH side); mark and drill rivet holes in beams and install angles to beams with MS20470AD4 rivets.

NOTE

If existing rivets were removed from mid span of beams; fabricate and install doublers on outboard side of beams, as shown. Use MS20470AD5 rivets when installing both -3 angle and doubler to beams.

i. Position -3 angle on outboard side of 2256 beam (LH side); mark and drill rivet holes in beam and install angle with MS20470AD4 rivets.

NOTE

1. If required, make cutout at forward end of -3 angle, as shown, with radius sufficient to accommodate bushing when reinstalling voltage regulator.
2. If existing rivets were removed from mid span of beam, fabricate and install doubler to inboard side of beam, as shown; use MS20470AD5 rivets when installing both -3 angle and doubler to beam.

j. Position -7 gusset (4 places) as shown at junction of 2124 and 2252-3 beams and 2124 and 2256 beams. Mark and drill holes in beams and install gussets with rivets. Use existing rivet holes in beams. (Refer to Figure 1).

k. Reinstall voltage regulator on 2256 beam (LH side); use longer screws and bushings.

NOTE

1. Check that radius of cutout in -3 angle (step i. Note 1.) permits unobstructed installation of regulator mounting screw and bushing.
 2. Trim gusset, if necessary, to prevent interference or bushing.
1. Reinstall landing light relay to original 2252-3 or 2256 beam (RH side); reinstall mounting plate and radio power supply unit, if originally installed.

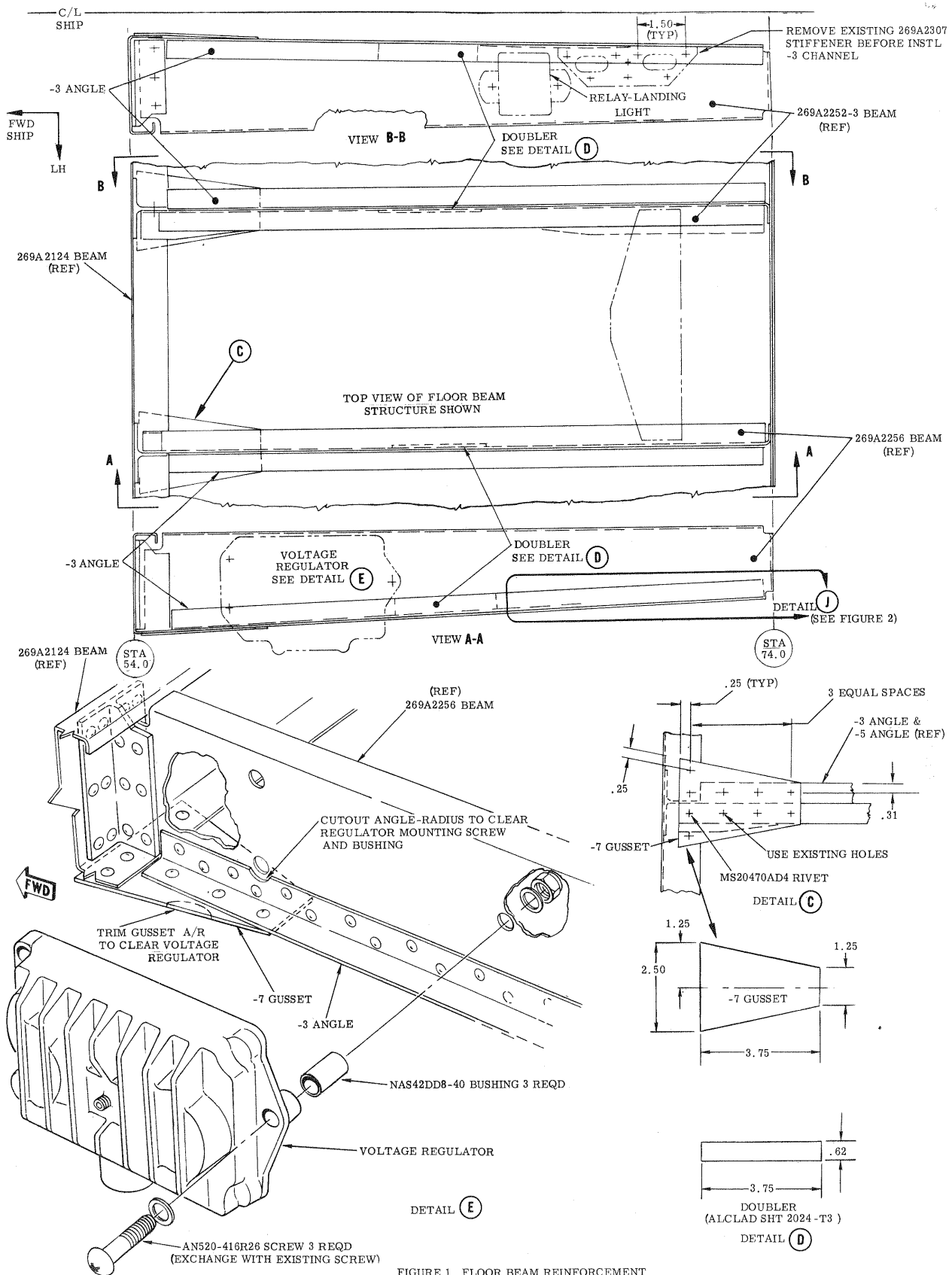


FIGURE 1. FLOOR BEAM REINFORCEMENT

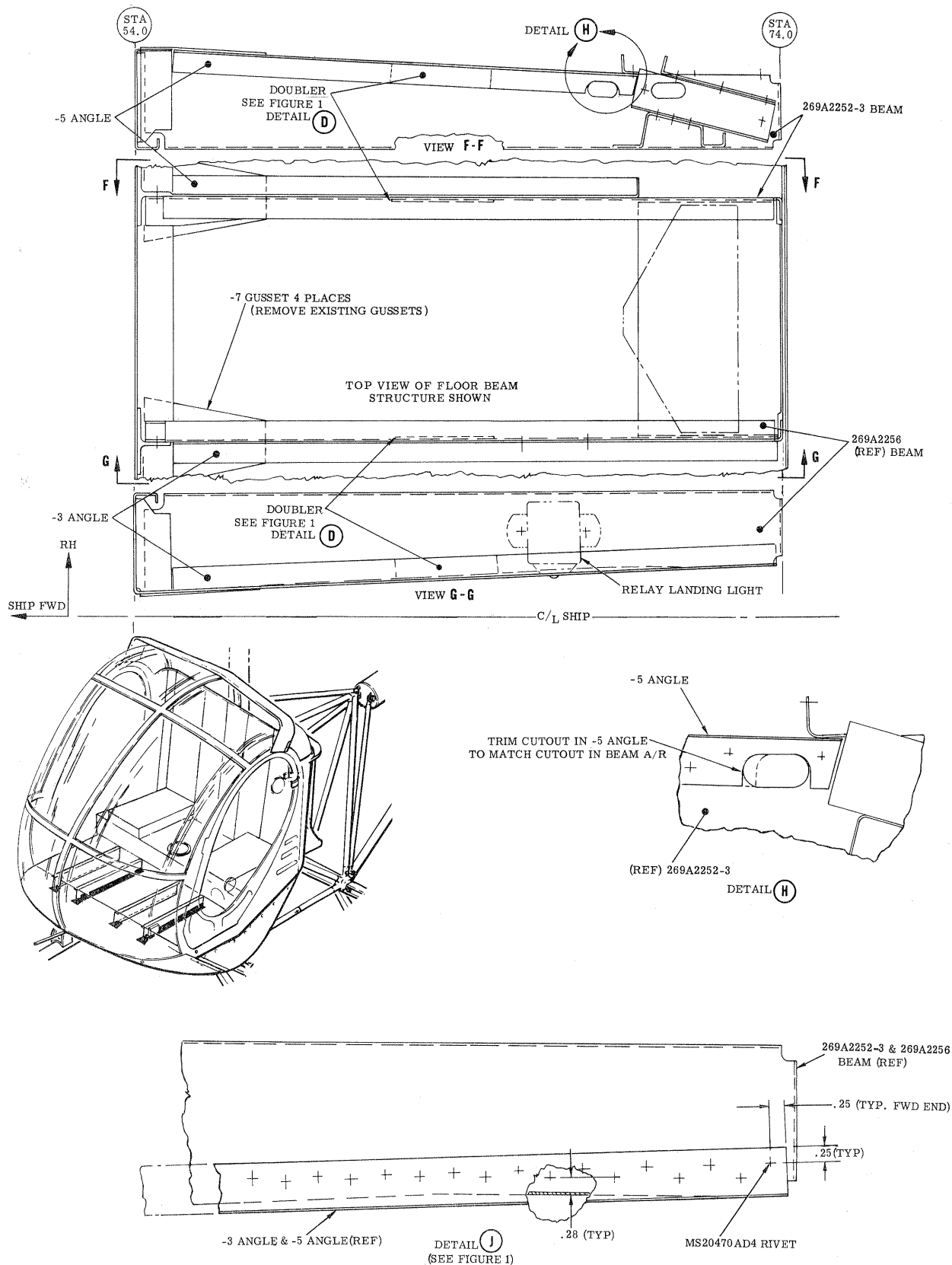


FIGURE 2. FLOOR BEAM REINFORCEMENT