



**HUGHES
SERVICE INFORMATION
NOTICE**

NOTICE NO. N-67
DATE Feb. 21, 1969
PAGE 1 OF 3

**SUBJECT: INSPECTION, MAIN ROTOR SWASHPLATE SCISSORS
LINK ASSEMBLIES (P/N 269A1335 AND 269A1336)**

MODELS AFFECTED: All 269 Series Helicopters

**TIME OF COMPLIANCE: Shall be accomplished within next twenty-five (25)
hours of helicopter operation.**

PREFACE:

The information given in this Service Information Notice lists an inspection procedure to ensure that (1) main rotor upper and lower swashplate scissors link assemblies are properly installed, and (2) scissors link bearings are free of binding, damage and wear. Field reports have pointed out that scissors links have been inadvertently installed backwards.

Reference

269A/A-1/TH-55A Handbook of Maintenance Instruction, Revised 1 June 1968
269B Handbook of Maintenance Instruction, Revised 1 July 1968

PROCEDURE

- a. Visually inspect lower scissors link assembly (P/N269A1336) for proper installation: (See Figure 1)
 1. Side of scissors link with swage and larger diameter bore should be positioned OUT BOARD toward bolt head.
- b. Visually inspect upper scissors link assembly (P/N269A1335) for proper installation:
 1. Side of scissors link with swage and larger diameter bore should be positioned INBOARD toward nut.

CAUTION

If improper installation of scissors link is noted, remove and inspect scissors link for possible wear or separation of staked bearing. Replace with new scissors link, if required; lubricate scissors link per lubrication chart, Section II of HMI. Install scissors link assembly in proper manner, as shown in Figure 1.

NOTE

Fail-safe washers (P/N269A1263 and 269A6233) are factory installed on later model helicopters to prevent wear or separation of staked bearings due to improper installation of scissors link assembly. Fail-safe washers may be installed on early model helicopters at owners and operators discretion.

- c. Record compliance with this Service Information Notice in Compliance Record of Helicopter Log Book.

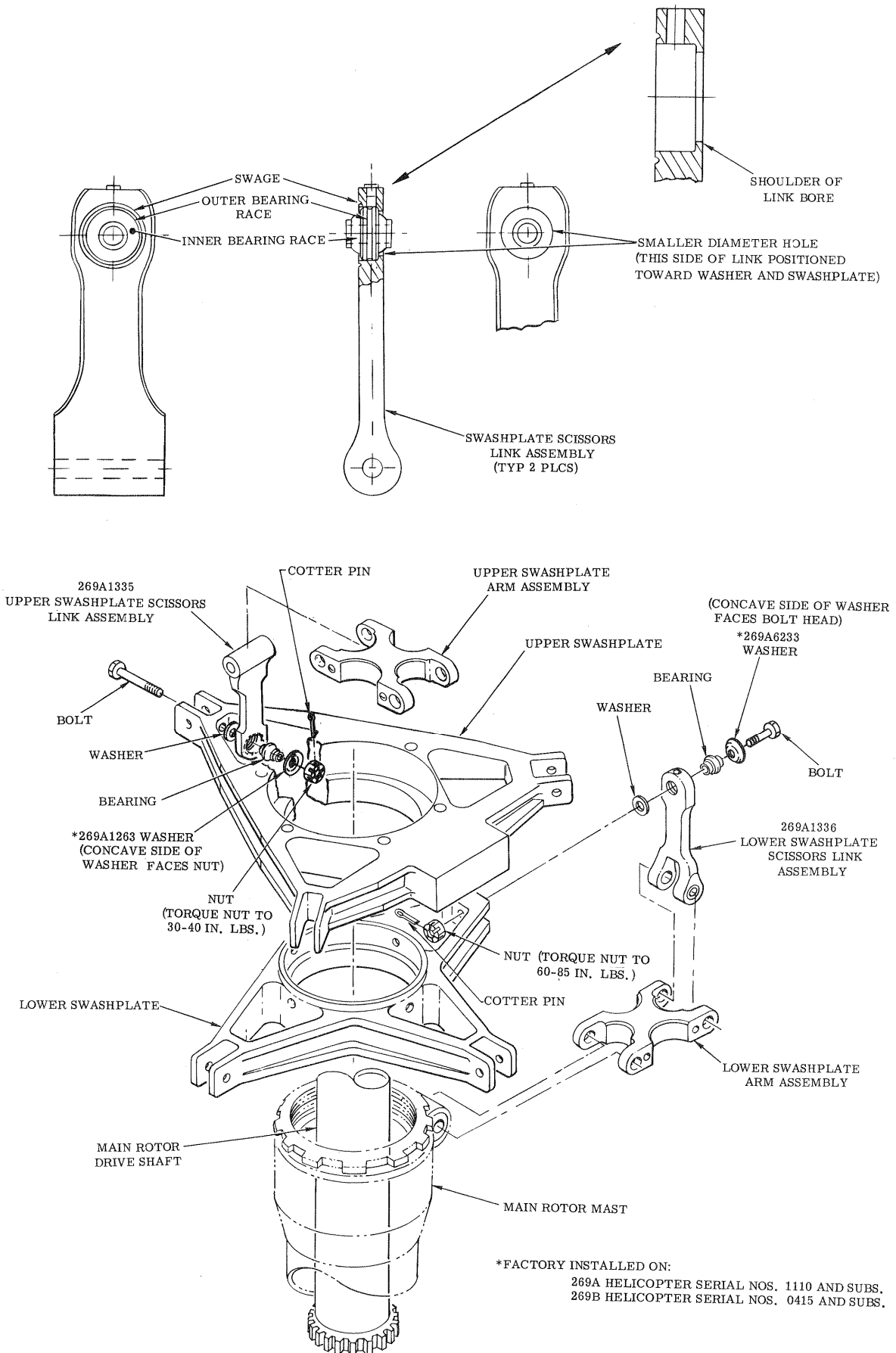


FIGURE 1. INSTALLATION - MAIN ROTOR SWASHPLATE SCISSORS ARM ASSEMBLIES (P/N 269A1335 AND 269A1336)

