



**HUGHES  
SERVICE INFORMATION  
NOTICE**

NOTICE NO. N-77. 1\*

DATE 14 Feb 1972

PAGE 1 OF 4

\*Supersedes Service Information  
Notice No. N-77, dated 21 Apr  
1970

MANDATORY

MANDATORY

MANDATORY

**SUBJECT:**

INSTALLATION - BELT DRIVE CLUTCH  
CABLE GUARD, KIT PART NO. M10041

**MODELS AFFECTED:**

269A (TH-55A) Helicopter Serial Nos. 0315 and subs.  
269B Helicopter Serial Nos. 0001 and subs.  
269C Helicopter Serial Nos. 0001 and subs.

**TIME OF COMPLIANCE:**

At owners and operators discretion

**PREFACE:**

The information given in this Service Information Notice lists a procedure for installation of a tubular guard assembly designed to protect the drive clutch cable from wear and damage caused by external sources.

**Reference**

269 Series - Basic Handbook of Maintenance Instructions, Revised 1 Feb 1972

(■) Bar denotes portion of text added or revised

Customer Service Department

**PARTS LIST**

<u>Nomenclature</u>	<u>Part No.</u>	<u>Qty.</u>	<u>Mfgr.</u>
Guard Installation Clutch Control Cable	M10041	1	HTC-AD

- a. Set battery (BAT) switch to ON position.
- b. Set clutch control switch to RELEASE position (guard open).

**NOTE**

This releases tension on clutch control rigging cable.

- c. Set battery switch to OFF position.
- d. Cut and remove lockwire or remove clip from cable turnbuckle at linear actuator.
- e. Remove cotter pin, washers and pin connecting turnbuckle eye to clevis of linear actuator.
- f. Inspect clutch cable for evidence of galling, fretting, evidence of corrosion or burns, or broken strands (none allowed).

**NOTE**

Replace clutch cable if any strand breakage is noted, or if excessive wear or damage is evident.

- g. Slide P/N M10041-3 tubular guard on clutch cable assembly.
- h. Position turnbuckle eye in actuator clevis; install pin, washers and new cotter pin.
- i. Rig clutch control cable for a tension of 230  $\pm$ 5 pounds with actuator retracted and belts clutched in but not operating. Adjust linear actuator, if required, per Section 10 of Basic HMI.

NOTE

Black band on clutch control spring assembly housing represents the original tension adjustment of 230  $\pm$ 5 pounds. With actuator retracted, cable tension spring guide should align with black band.

- j. Safety wire turnbuckle in accordance with MS33540, or use clip.
- k. Position tubular guard snugly on actuator assembly.
- l. Position P/N MS21919F12 clamp on P/N 269A2239-17 frame tube; position P/N MS21919F14 clamp on tubular guard, as shown.
- m. Secure clamps with screw, washer and nut.
- n. Check clutch control cable guard assembly for discrepancies.
- o. Perform operational check of belt drive clutch control linear actuator, per HMI.

WEIGHT AND BALANCE DATA

Weight and balance not affected.

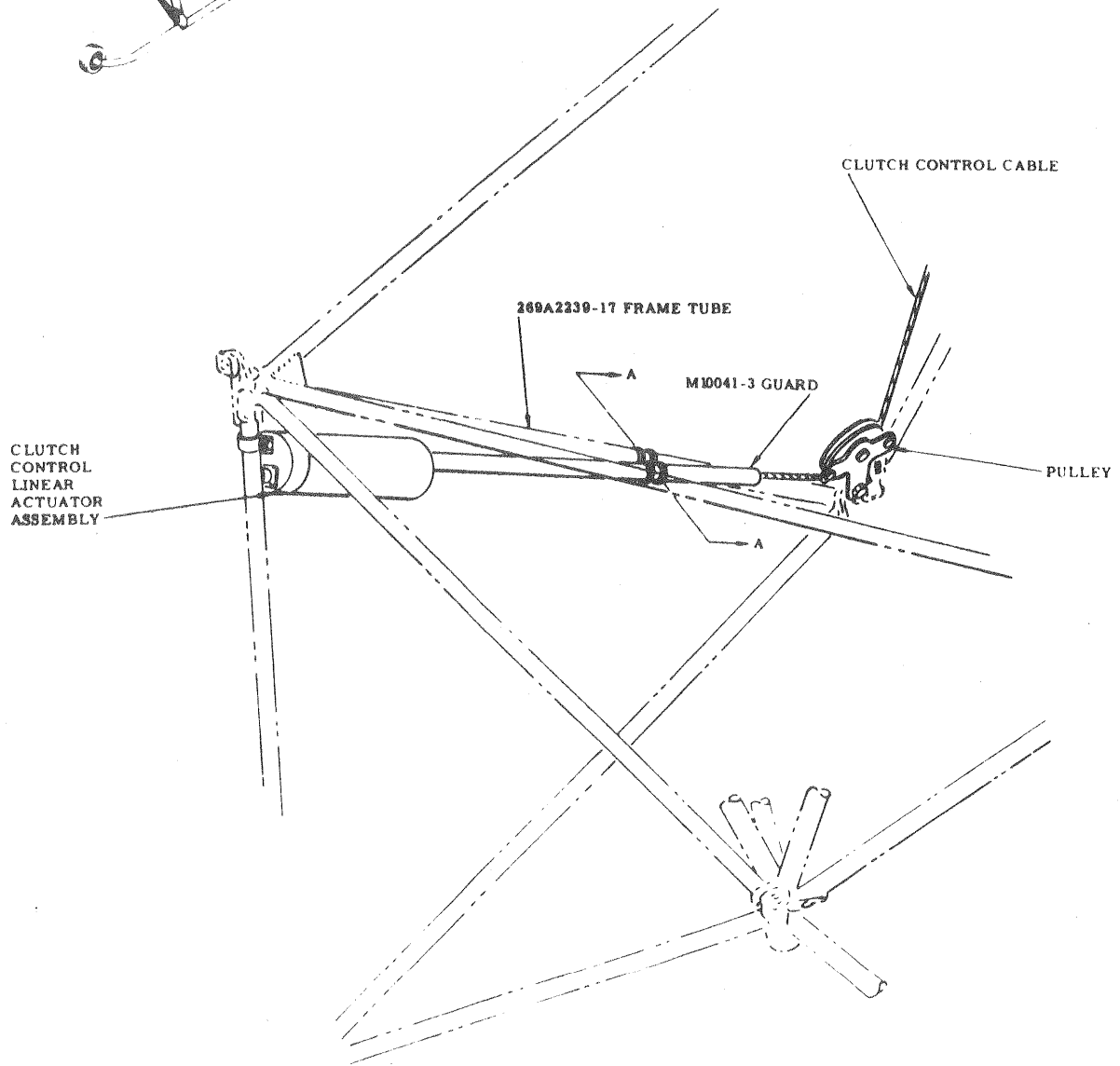
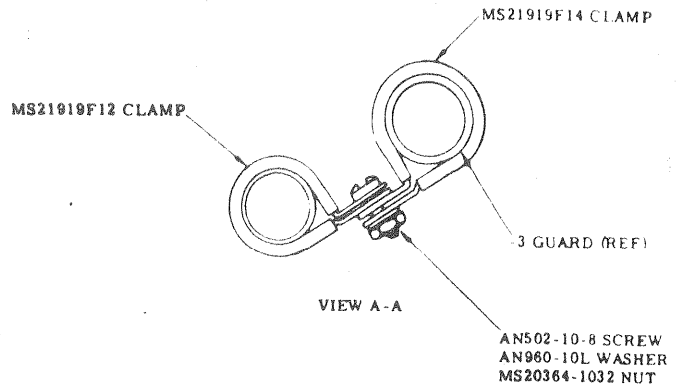
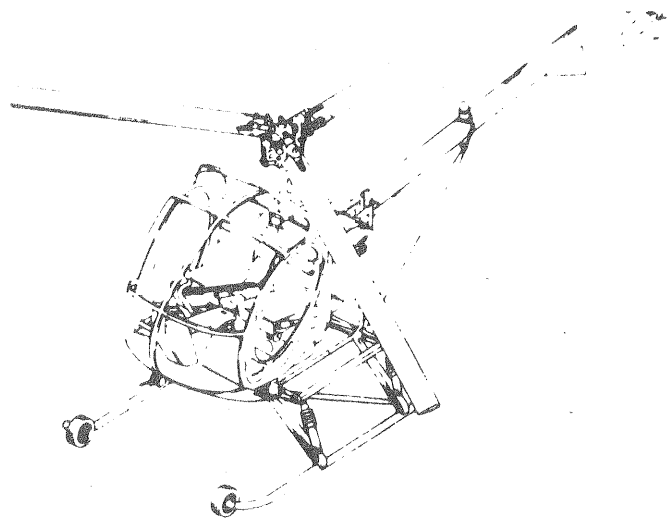


FIGURE 1 GUARD INSTALLATION - CLUTCH CONTROL CABLE