

SCHWEIZER AIRCRAFT CORP.

Supplement to the Approved
Rotorcraft Flight Manual

For

Schweizer 300C Model 269C Helicopters

with

EXTENDED HEIGHT LANDING GEAR
(Part Number 269A3260-1)

Date of Original Approval : NOV 12 1987

Approved By: Michele J. Maurer
Michele J. Maurer,
Manager, Systems and Flight Test
Branch, NYACO, ANE-172

SCHWEIZER MODEL 269C HELICOPTER
CSP-C-1T

LOG OF PAGES

| Page | Date | Page | Date |
|------|-------------|------|-------------|
| 1 | 12 Nov 1997 | 7 | 12 Nov 1997 |
| 2 | 12 Nov 1997 | 8 | 12 Nov 1997 |
| 3 | 12 Nov 1997 | 9 | 12 Nov 1997 |
| 4 | 12 Nov 1997 | 10 | 12 Nov 1997 |
| 5 | 12 Nov 1997 | | |
| 6 | 12 Nov 1997 | | |

LOG OF REVISIONS

| Number Change | Date | Description |
|---------------|------|-------------|
| | | |

NOTE

The change bar (■) defines the latest approved changes.

SCHWEIZER MODEL 269C HELICOPTER
CSP-C-1T

INDEX

| Section | Title | Page |
|---------|--|------|
| I | General | 5 |
| II | Limitations | 7 |
| III | Emergency and Malfunction Procedures | 7 |
| IV | Normal Procedures | 7 |
| V | Performance Data | 7 |
| VI | Weight & Balance Data | 8 |
| VII | Aircraft Handling, Servicing & Maintenance | 10 |
| VIII | Additional Operations & Performance Data | 10 |

SCHWEIZER MODEL 269C HELICOPTER
CSP-C-1T

This page is intentionally left blank.

SCHWEIZER MODEL 269C HELICOPTER
CSP-C-1T

SECTION I
General

This supplement must be carried in the applicable basic FAA approved 300C Model 269C Rotorcraft Flight Manual when the rotorcraft is equipped with the optional 269A3260-1 Extended Height Landing Gear. Except as modified by this flight manual supplement, operation in compliance with the basic approved Rotorcraft Flight Manual is mandatory.

The Schweizer Extended Height Landing Gear provides additional ground clearance for the helicopter, see Figure 1-1.

SCHWEIZER MODEL 269C HELICOPTER
CSP-C-1T

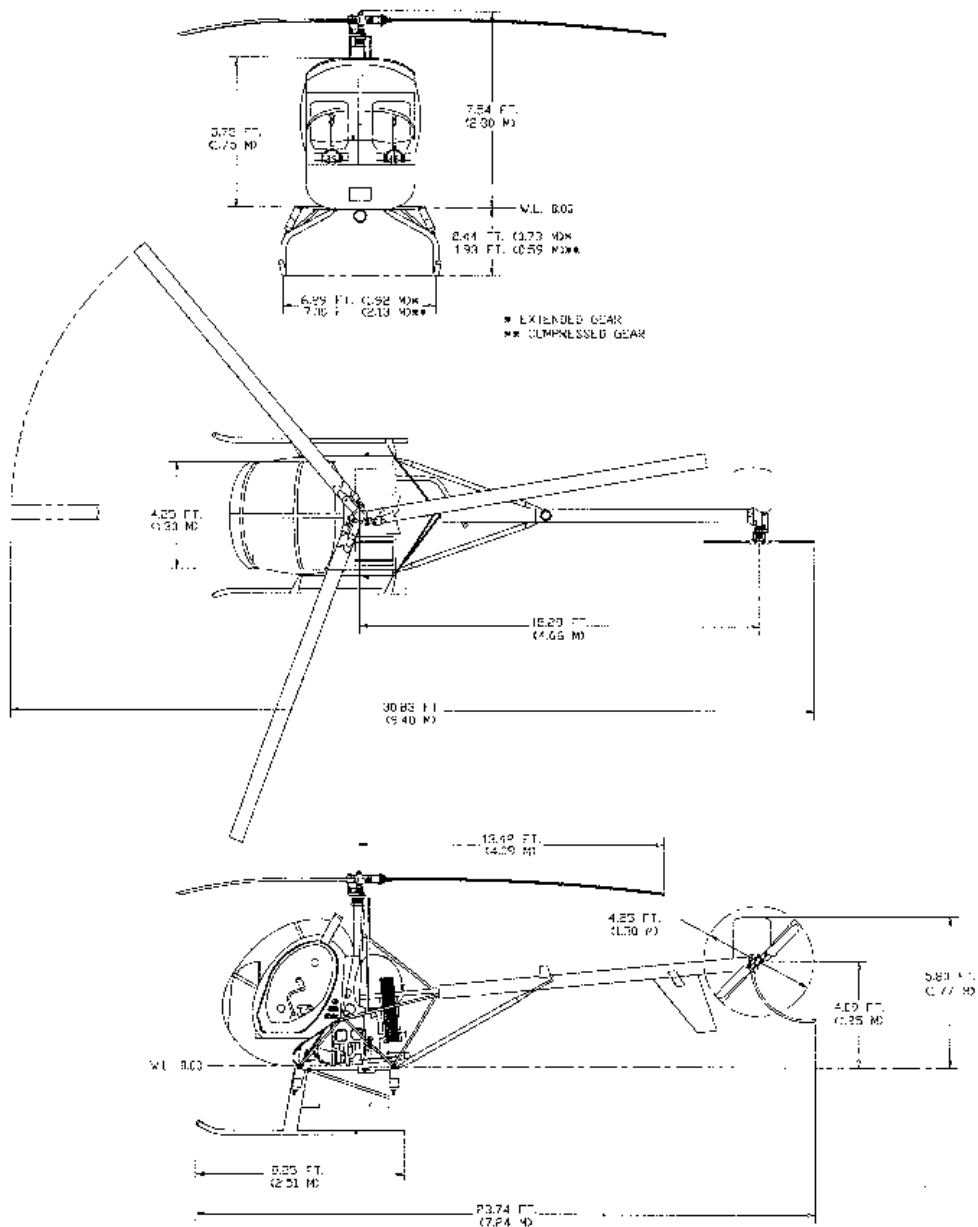


Figure 1-1. Principal Dimensions

SCHWEIZER MODEL 269C HELICOPTER
CSP-C-1T

SECTION II

Limitations
Not Affected

SECTION III

Emergency and Malfunction Procedures
Not Affected

SECTION IV

Normal Procedures

4.1 PRACTICE AUTOROTATION

CAUTION

Any running landing with new skid shoes will result in a more noticeable nose down tendency during ground slide.

SECTION V

Performance Data

Reduce all in-ground-effect hover ceilings (2-foot skid height) shown in Section 5 of the Basic RFM by 260 feet when equipped with the Extended Height Landing Gear.

SCHWEIZER MODEL 269C HELICOPTER
CSP-C-1T

SECTION VI
Weight and Balance Data

- 6-1.** The 269A3260-1 Extended Height Landing Gear uses different jacking points than the standard height landing gear to perform aircraft weight and balance. See Figure 6-1 for new jacking point locations.

SCHWEIZER MODEL 269C HELICOPTER CSP-C-1T

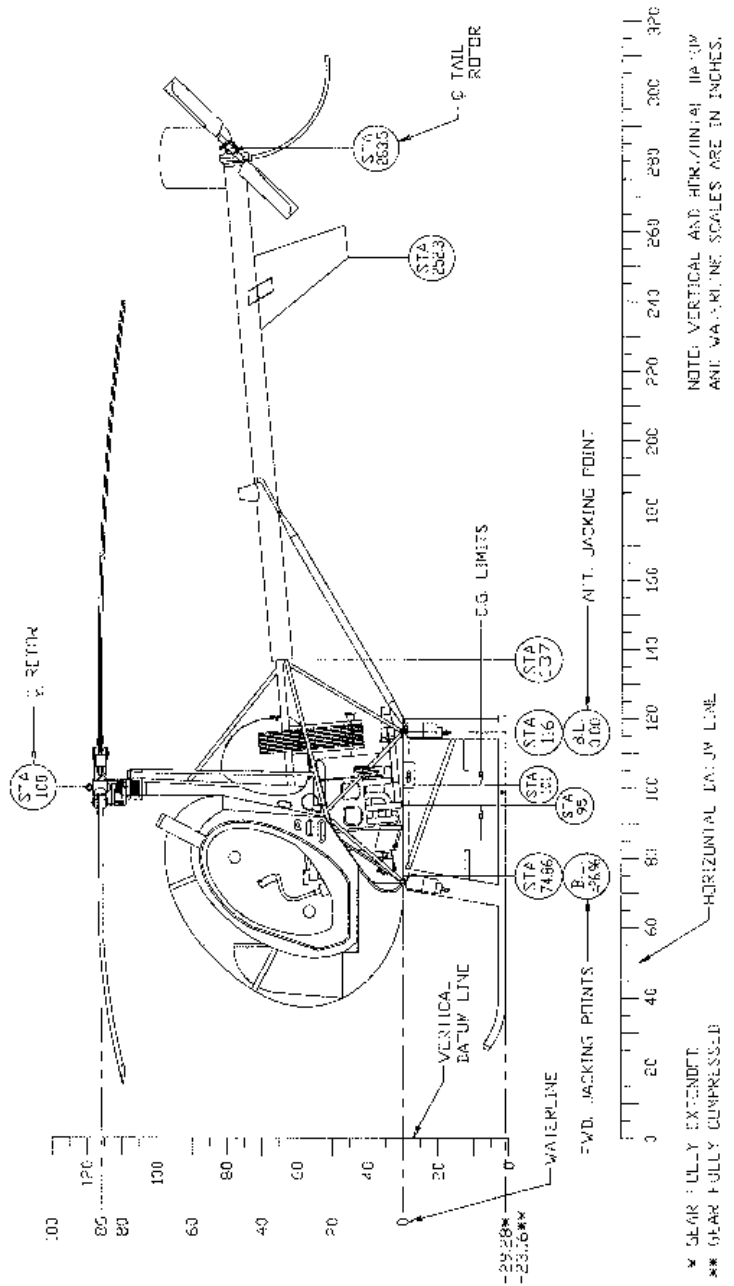


Figure 6-1. Station Diagram

SCHWEIZER MODEL 269C HELICOPTER
CSP-C-1T

SECTION VII

Aircraft Handling, Servicing and Maintenance
Not Affected

SECTION VIII

Additional Operations and Performance Data

Extended Height Landing Gear Installation effects on cruise performance
have not yet been determined.